



EXPLORER II

Email: mike@cowboyloghomes.com Phone: (406)388-3458 1

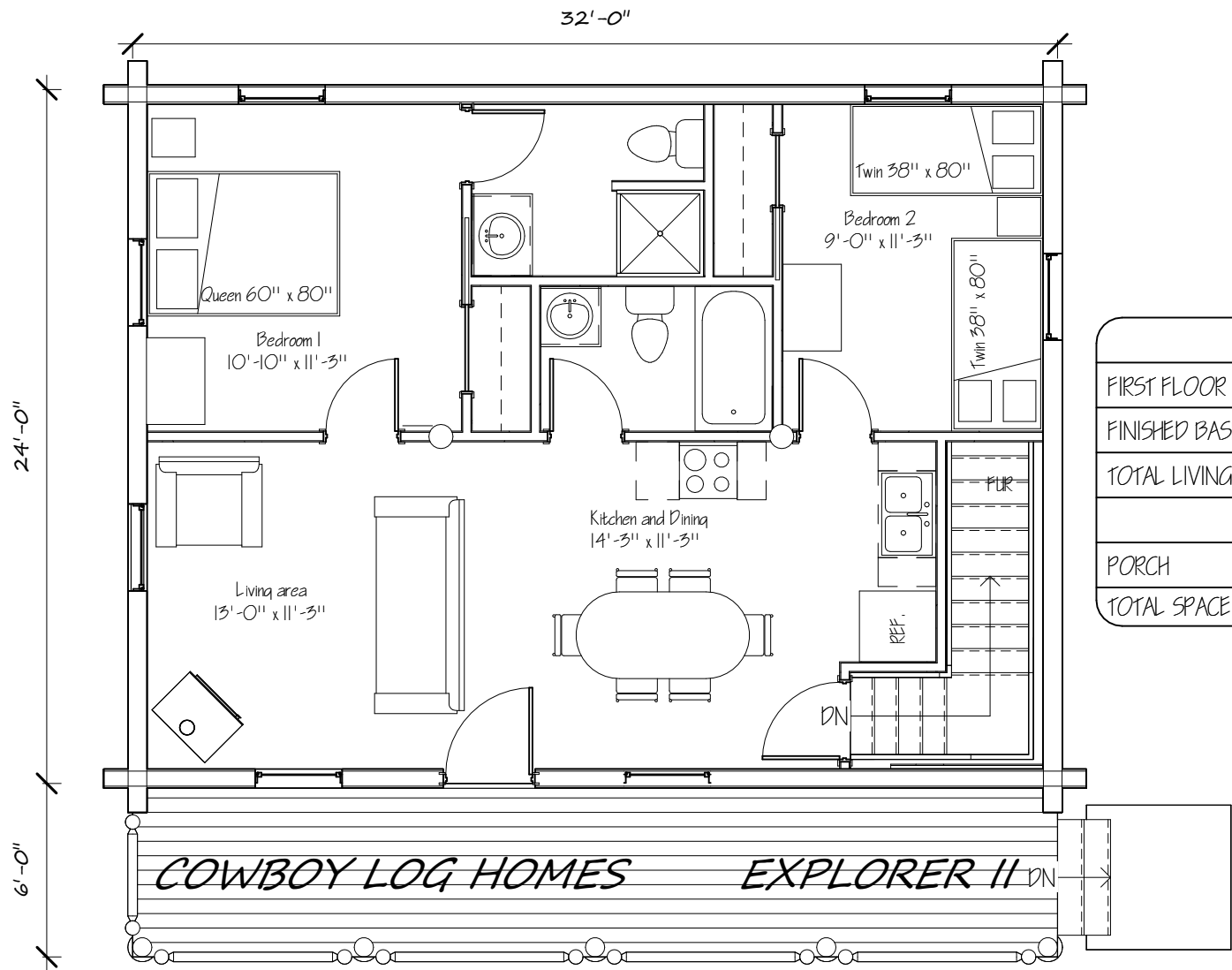


EXPLORER II
COWBOY LOG HOMES



EXPLORER II

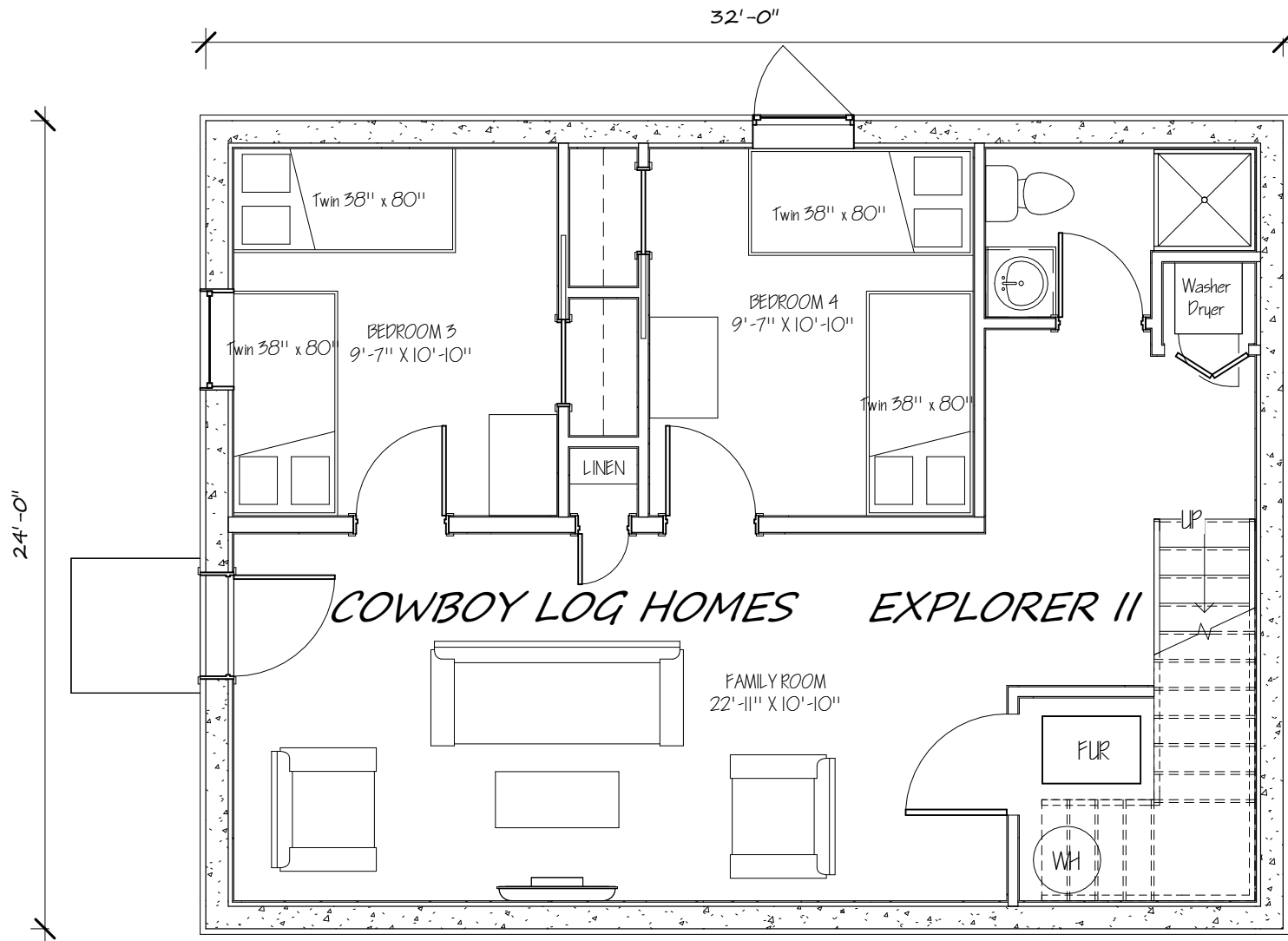
Email: mike@cowboyloghomes.com Phone: (406)388-3458 2



FLOOR SPACE	
FIRST FLOOR	768 SQ. FT.
FINISHED BASEMENT	696 SQ. FT.
TOTAL LIVING SPACE	1,464 SQ. FT.
PORCH	192 SQ. FT.
TOTAL SPACE	1,656 SQ. FT.



EXPLORER II

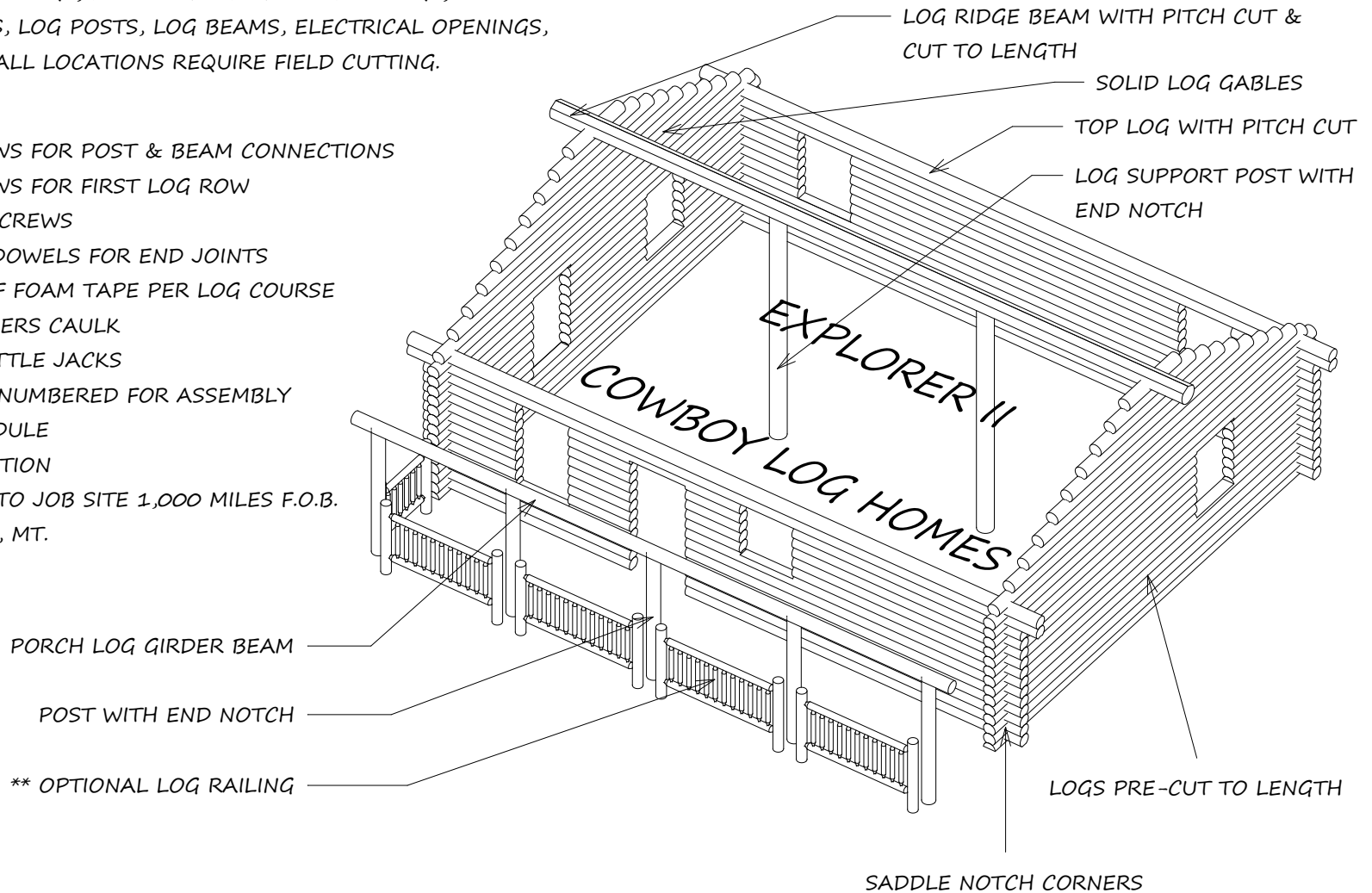


EXPLORER II

SWEDISH COPE LOG SHELL

WINDOW SILL LOGS, DOOR & WINDOW HEADER LOGS,
GABLE ENDS, LOG POSTS, LOG BEAMS, ELECTRICAL OPENINGS,
INTERIOR WALL LOCATIONS REQUIRE FIELD CUTTING.

- * LAG SCREWS FOR POST & BEAM CONNECTIONS
- * LAG SCREWS FOR FIRST LOG ROW
- * ONLY LOG SCREWS
- * 1" WOOD DOWELS FOR END JOINTS
- * 2 ROWS OF FOAM TAPE PER LOG COURSE
- * LOG BUILDERS CAULK
- * SCREW SETTLE JACKS
- * ALL LOGS NUMBERED FOR ASSEMBLY
- * LOG SCHEDULE
- * CONSTRUCTION
- * DELIVERY TO JOB SITE 1,000 MILES F.O.B.
BELGRADE, MT.



EXPLORER II

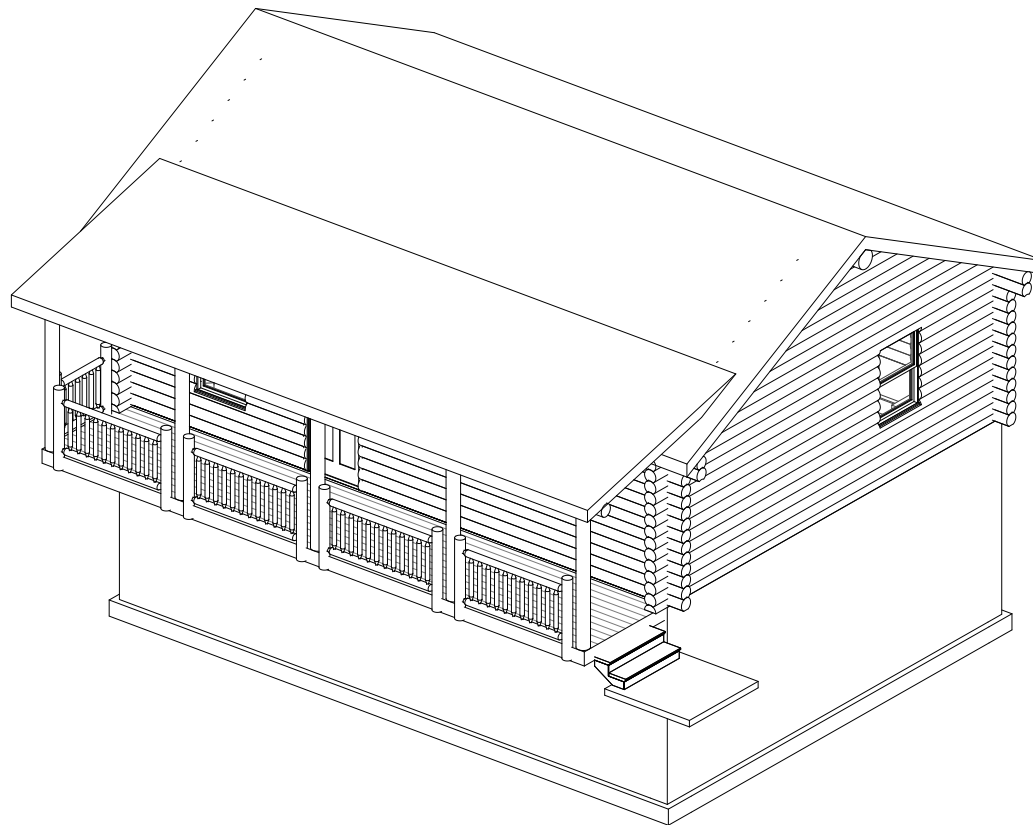
Email: mike@cowboyloghomes.com Phone: (406)388-3458 5

DRY IN MATERIALS INCLUDED

- ~ First floor framing & sheathing(2"x10" floor joists)
- ~ Treated sill plate and foam sill seal
- ~ Girder beam and support posts
- ~ Deck framing with joist hangers
- ~ 5/4" Decking
- ~ Interior wall framing first floor
- ~ Interior wall framing basement
- ~ Staircase to basement
- ~ Door and window bucks
- ~ Main roof framing
- ~ Porch roof framing
- ~ Roof sheathing
- ~ Roofing underlayment
- ~ Exterior 1x pine trim
- ~ Pine fascia
- ~ Pine 1x6 T&G soffit
- ~ Exterior door allowance
- ~ Window allowance

Materials not included

- ~ Nails, screws, caulking, liquid nail, treated post, stain, paint, concrete foundation, and finished roofing.



EXPLORER II

Email: mike@cowboyloghomes.com Phone: (406)388-3458 6