



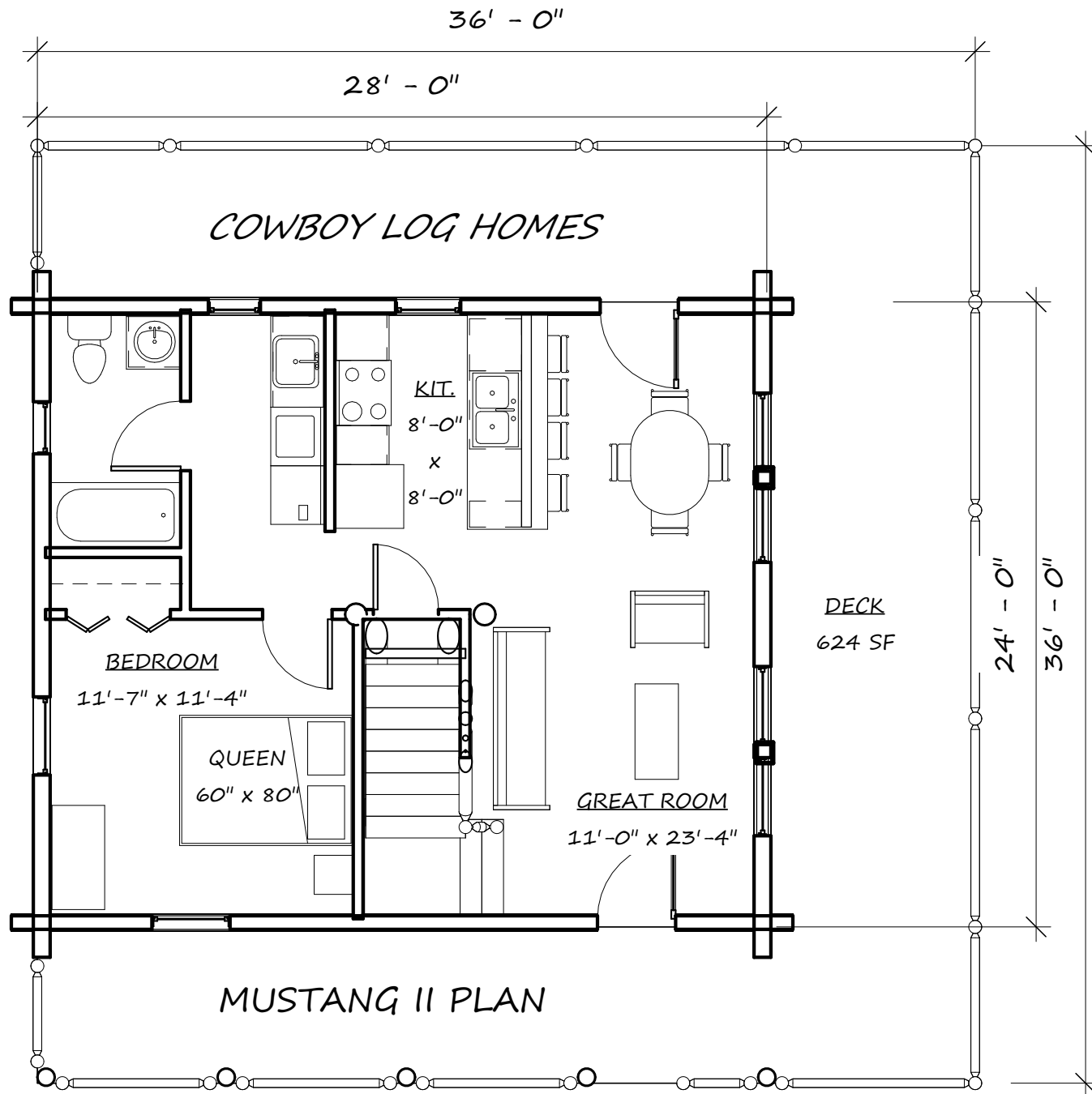
*COWBOY LOG HOMES*



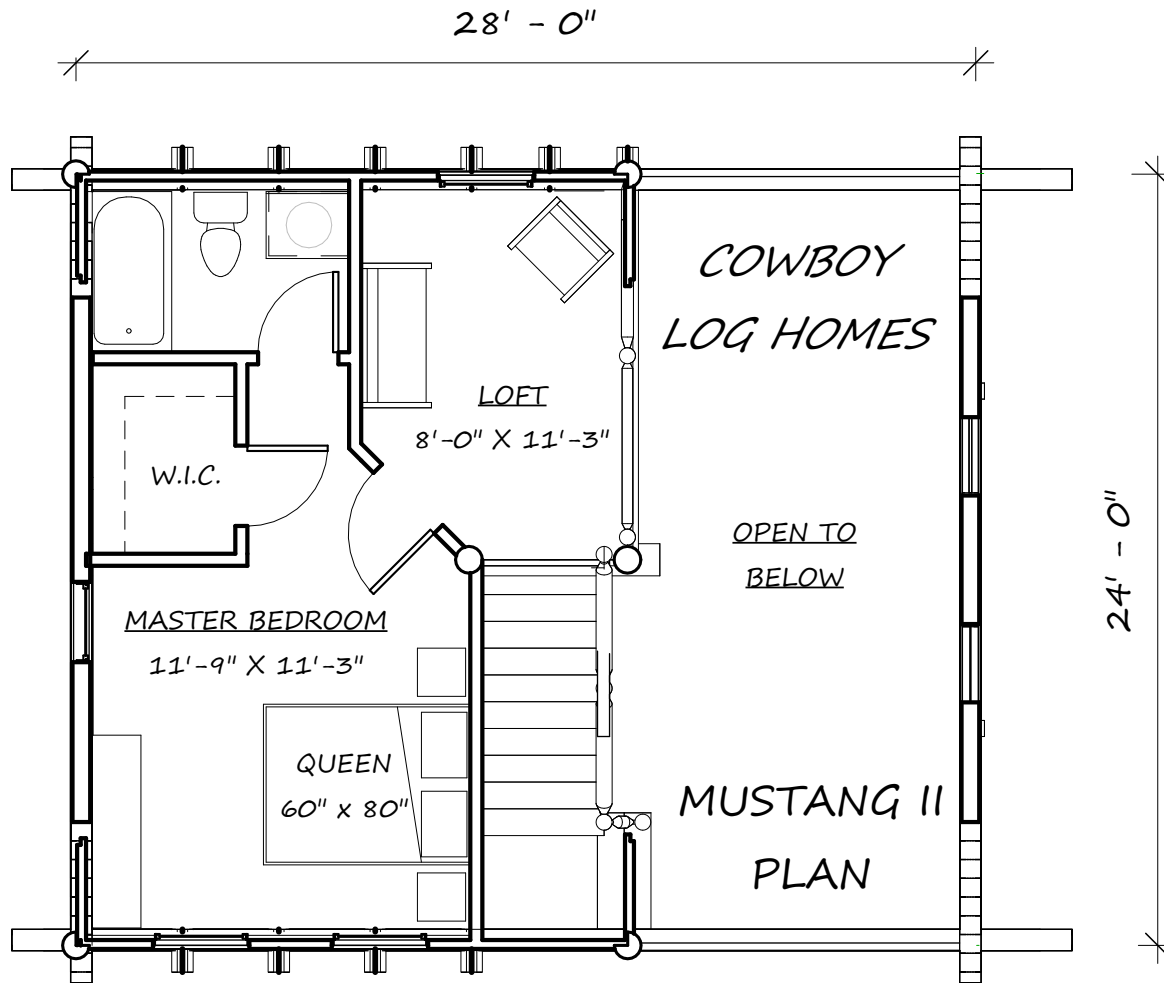
*MUSTANG 2*

Email: [mike@cowboyloghomes.com](mailto:mike@cowboyloghomes.com)

Phone: (406)388-3458

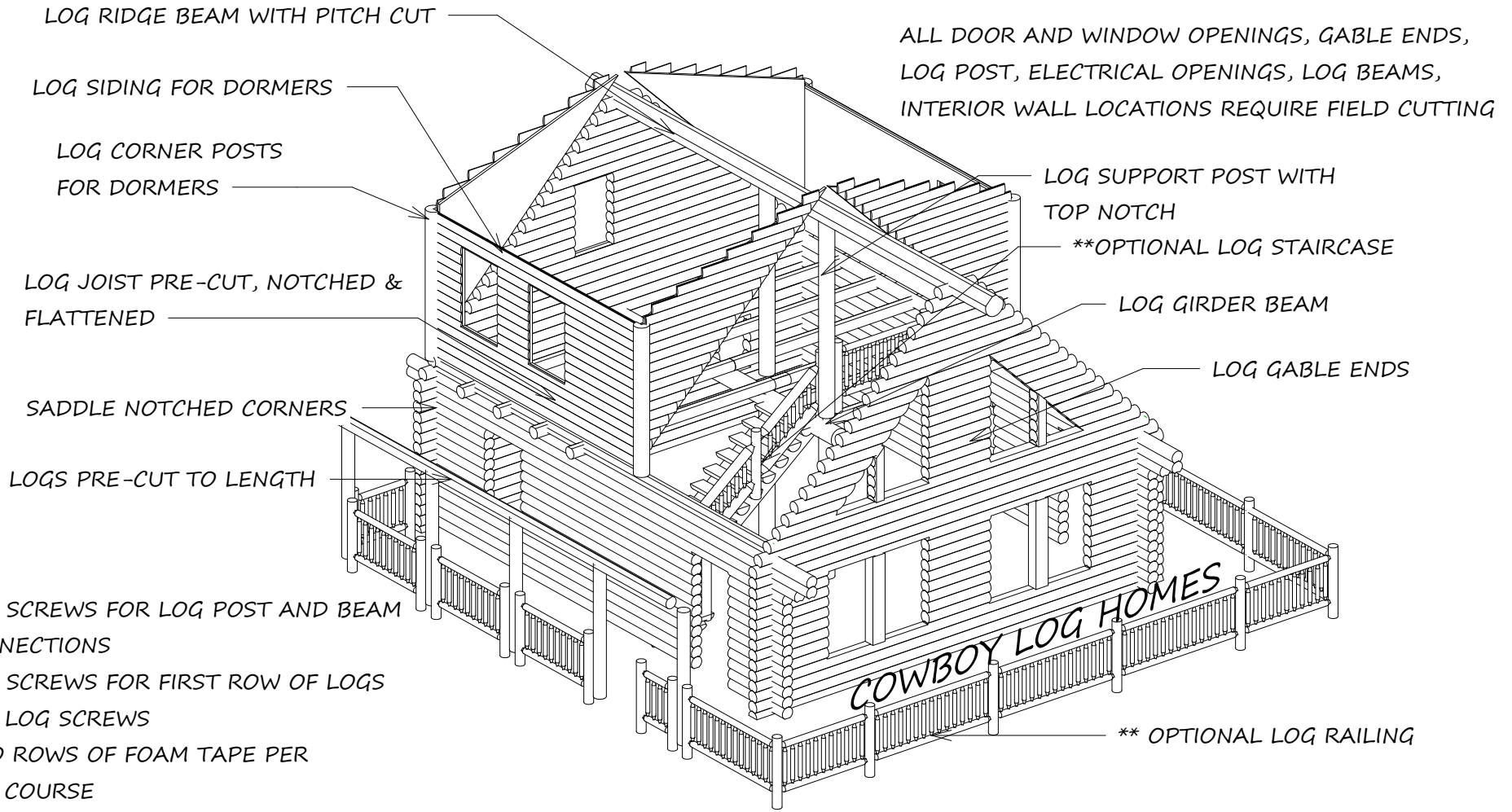


## MUSTANG 2



## MUSTANG 2

# SWEDISH COPE LOG SHELL PACKAGE



ALL DOOR AND WINDOW OPENINGS, GABLE ENDS, LOG POST, ELECTRICAL OPENINGS, LOG BEAMS, INTERIOR WALL LOCATIONS REQUIRE FIELD CUTTING

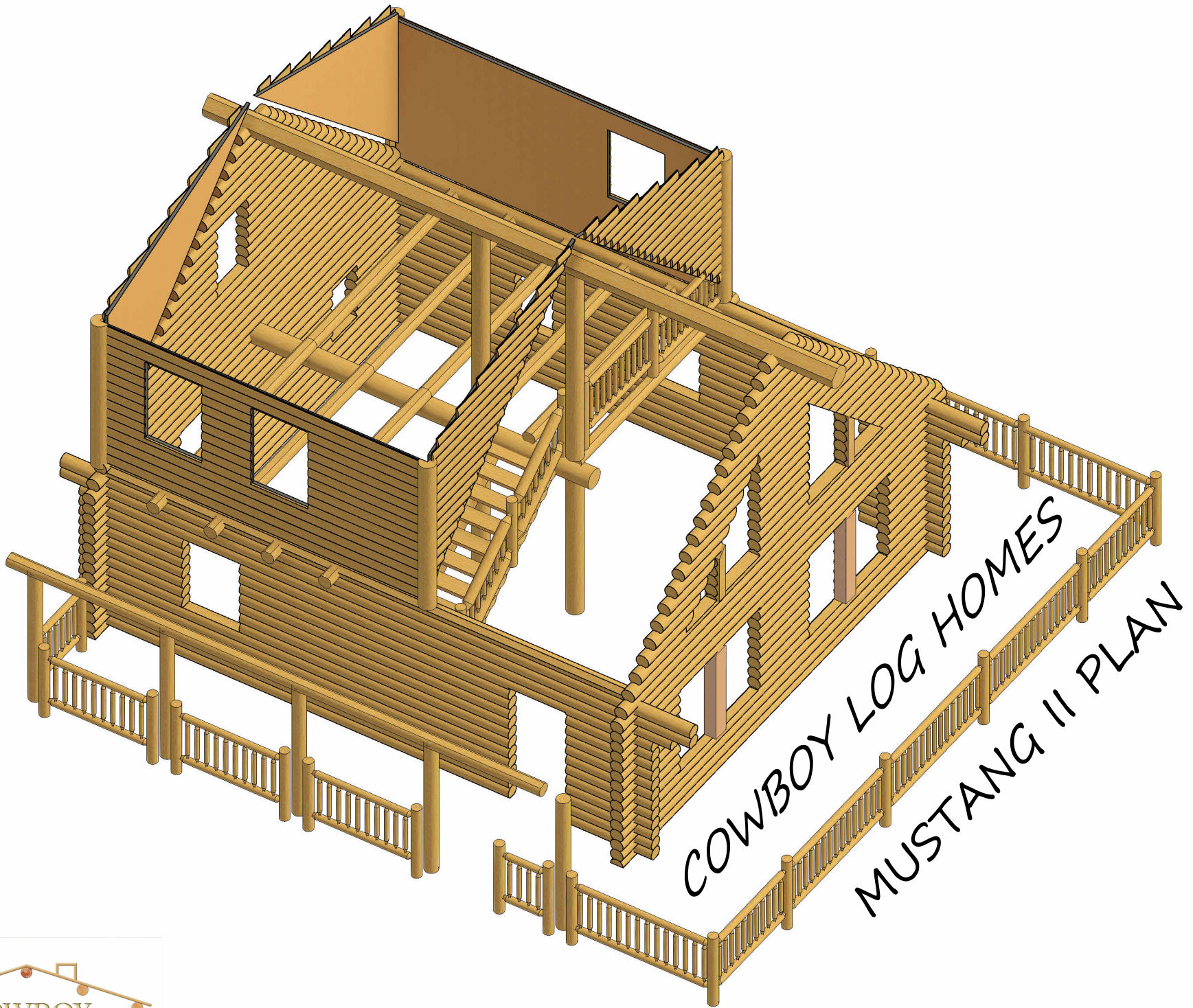
- \* LAG SCREWS FOR LOG POST AND BEAM CONNECTIONS
- \* LAG SCREWS FOR FIRST ROW OF LOGS
- \* ONLY LOG SCREWS
- \* TWO ROWS OF FOAM TAPE PER LOG COURSE
- \* LOG BUILDERS CAULK
- \* SCREW JACKS FOR SUPPORT POST
- \* ALL LOGS NUMBERED FOR ASSEMBLY
- \* LOG SCHEDULE
- \* CONSTRUCTION DRAWINGS
- \* DELIVERY TO JOB SITE 1,000 MILES F.O.B. BEL GRADE, MT.

## MUSTANG II PLAN



## MUSTANG 2





**MUSTANG 2**

Email: [mike@cowboyloghomes.com](mailto:mike@cowboyloghomes.com)

Phone: (406)388-3458