



*MADISON 2*

Email: [mike@cowboyloghomes.com](mailto:mike@cowboyloghomes.com)

Phone: (406)388-3458



*COWBOY LOG HOMES*



*MADISON 2*

Email: [mike@cowboyloghomes.com](mailto:mike@cowboyloghomes.com)

Phone: (406)388-3458



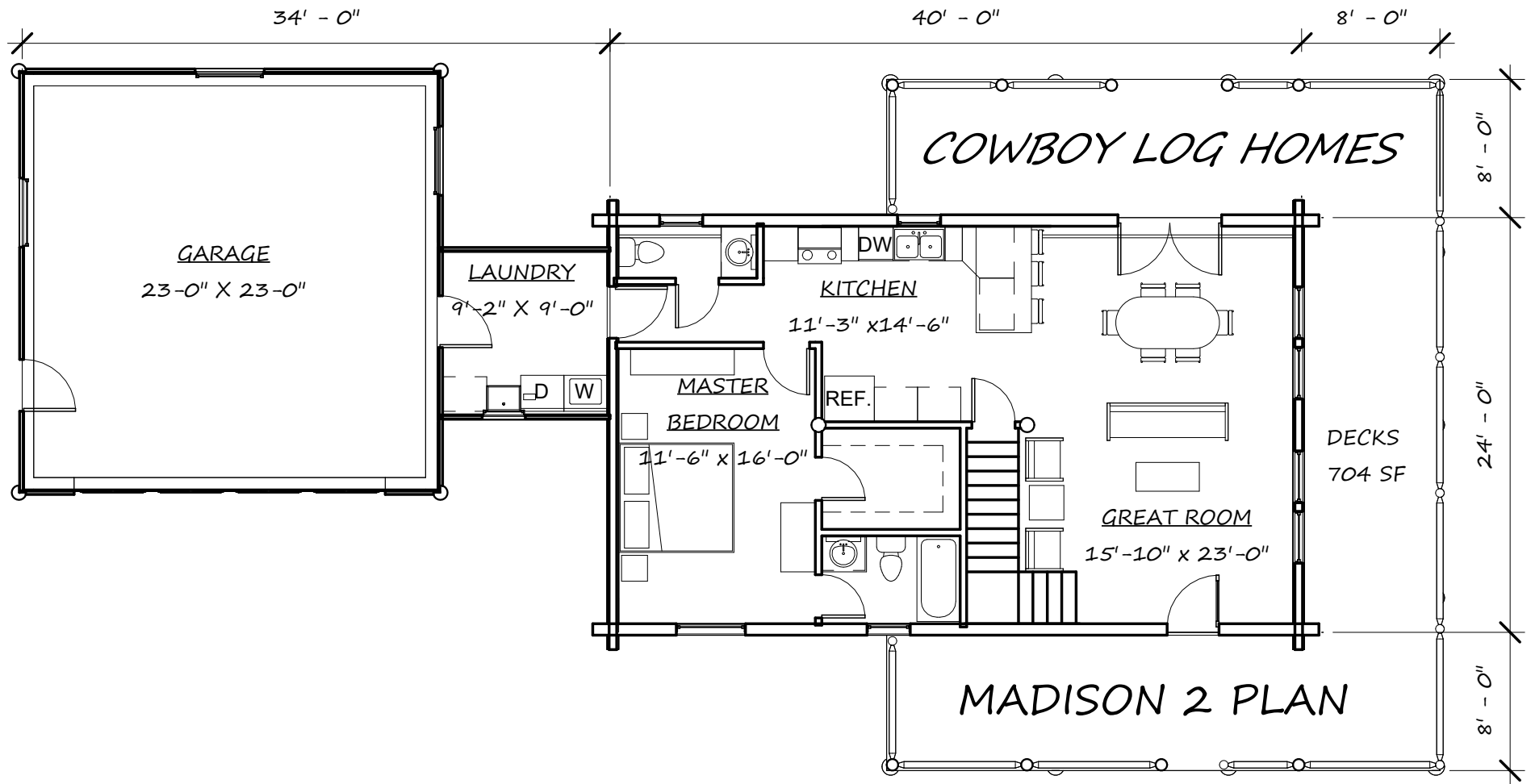
*COWBOY LOG HOMES*



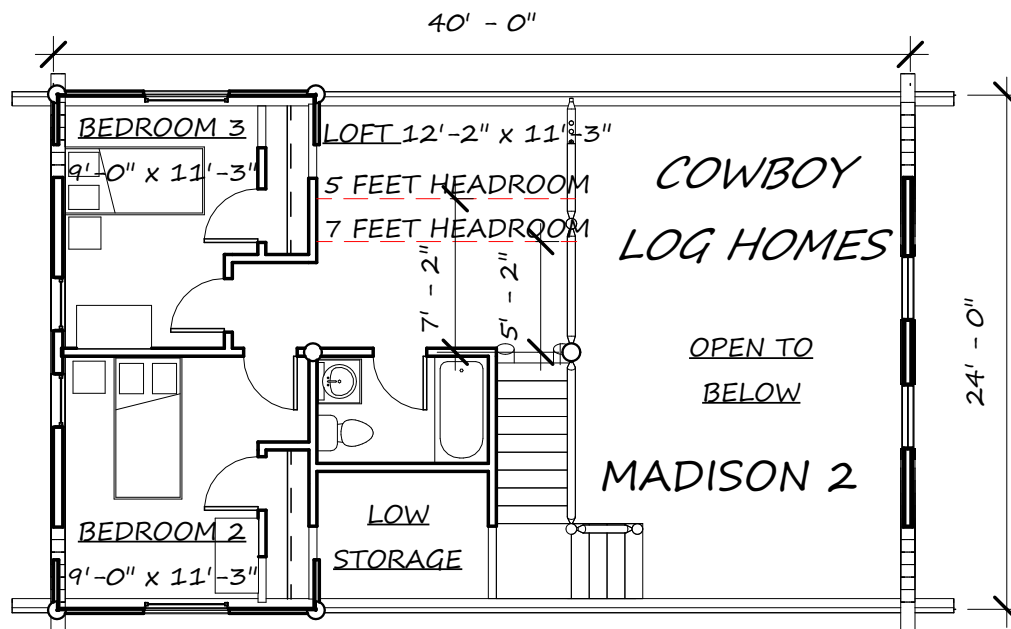
*MADISON 2*

Email: [mike@cowboyloghomes.com](mailto:mike@cowboyloghomes.com)

Phone: (406)388-3458



## MADISON 2



MADISON 2

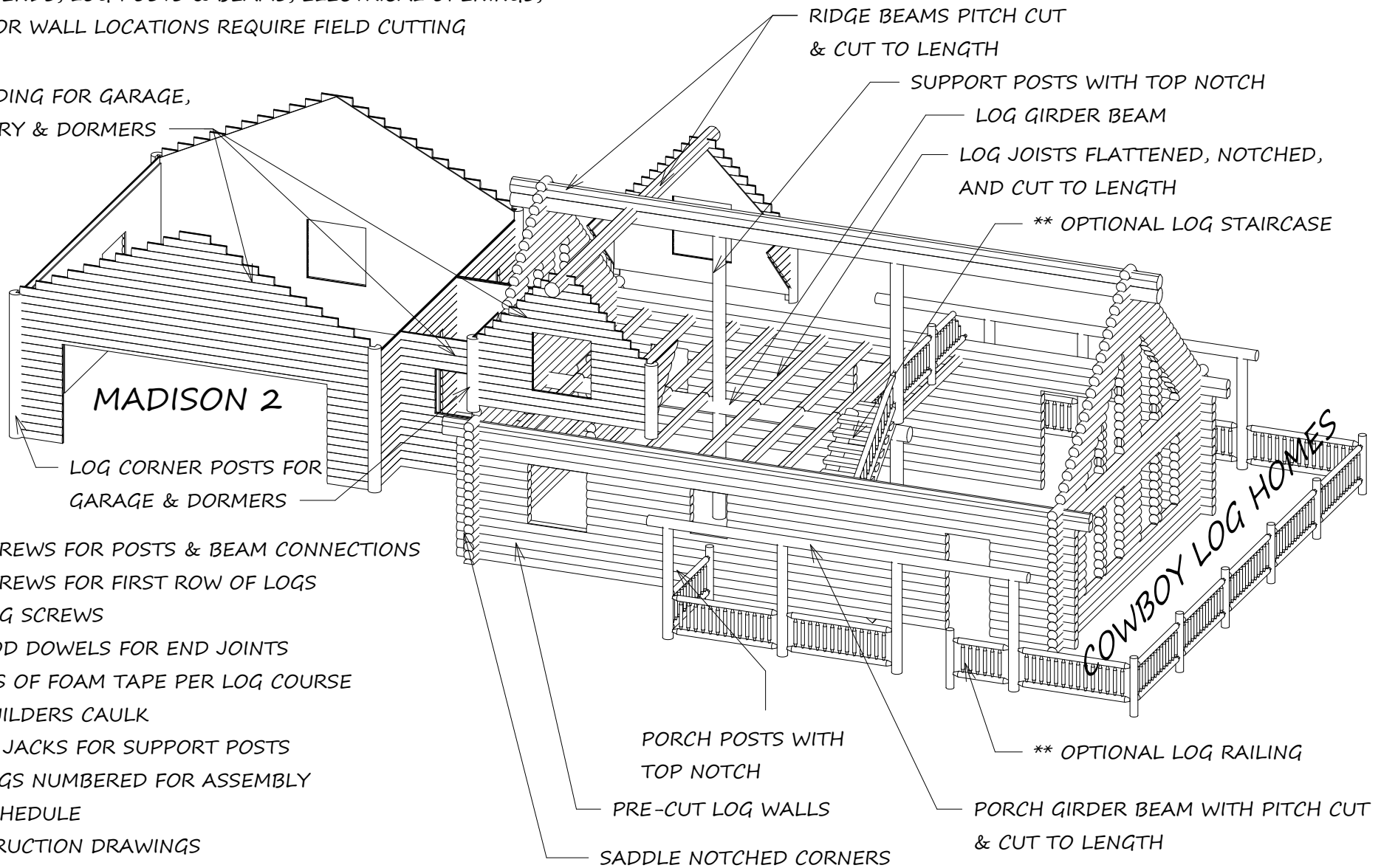
Email: [mike@cowboyloghomes.com](mailto:mike@cowboyloghomes.com)

Phone: (406)388-3458

WINDOW SILL LOGS, DOOR & WINDOW HEADER LOGS,  
 GABLE ENDS, LOG POSTS & BEAMS, ELECTRICAL OPENINGS,  
 INTERIOR WALL LOCATIONS REQUIRE FIELD CUTTING

## SWEDISH COPE LOG SHELL PACKAGE

LOG SIDING FOR GARAGE,  
 LAUNDRY & DORMERS



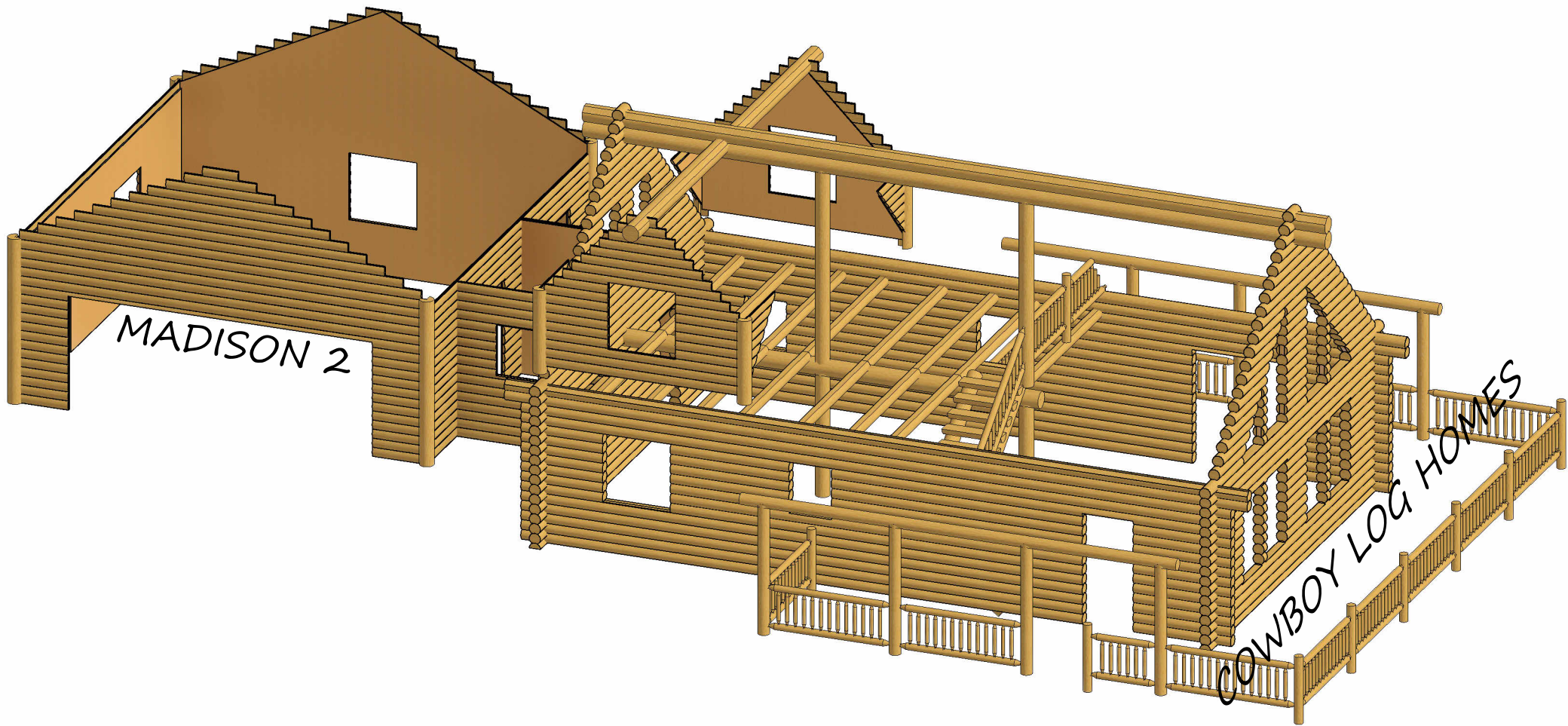
- \* LAG SCREWS FOR POSTS & BEAM CONNECTIONS
- \* LAG SCREWS FOR FIRST ROW OF LOGS
- \* OLY LOG SCREWS
- \* 1" WOOD DOWELS FOR END JOINTS
- \* 2 ROWS OF FOAM TAPE PER LOG COURSE
- \* LOG BUILDERS CAULK
- \* SCREW JACKS FOR SUPPORT POSTS
- \* ALL LOGS NUMBERED FOR ASSEMBLY
- \* LOG SCHEDULE
- \* CONSTRUCTION DRAWINGS
- \* DELIVERY TO JOB SITE 1,000 MILES F.O.B. BELGRADE, MT.



**MADISON 2**

Email: [mike@cowboyloghomes.com](mailto:mike@cowboyloghomes.com)

Phone: (406)388-3458



MADISON 2

Email: [mike@cowboyloghomes.com](mailto:mike@cowboyloghomes.com)

Phone: (406)388-3458