



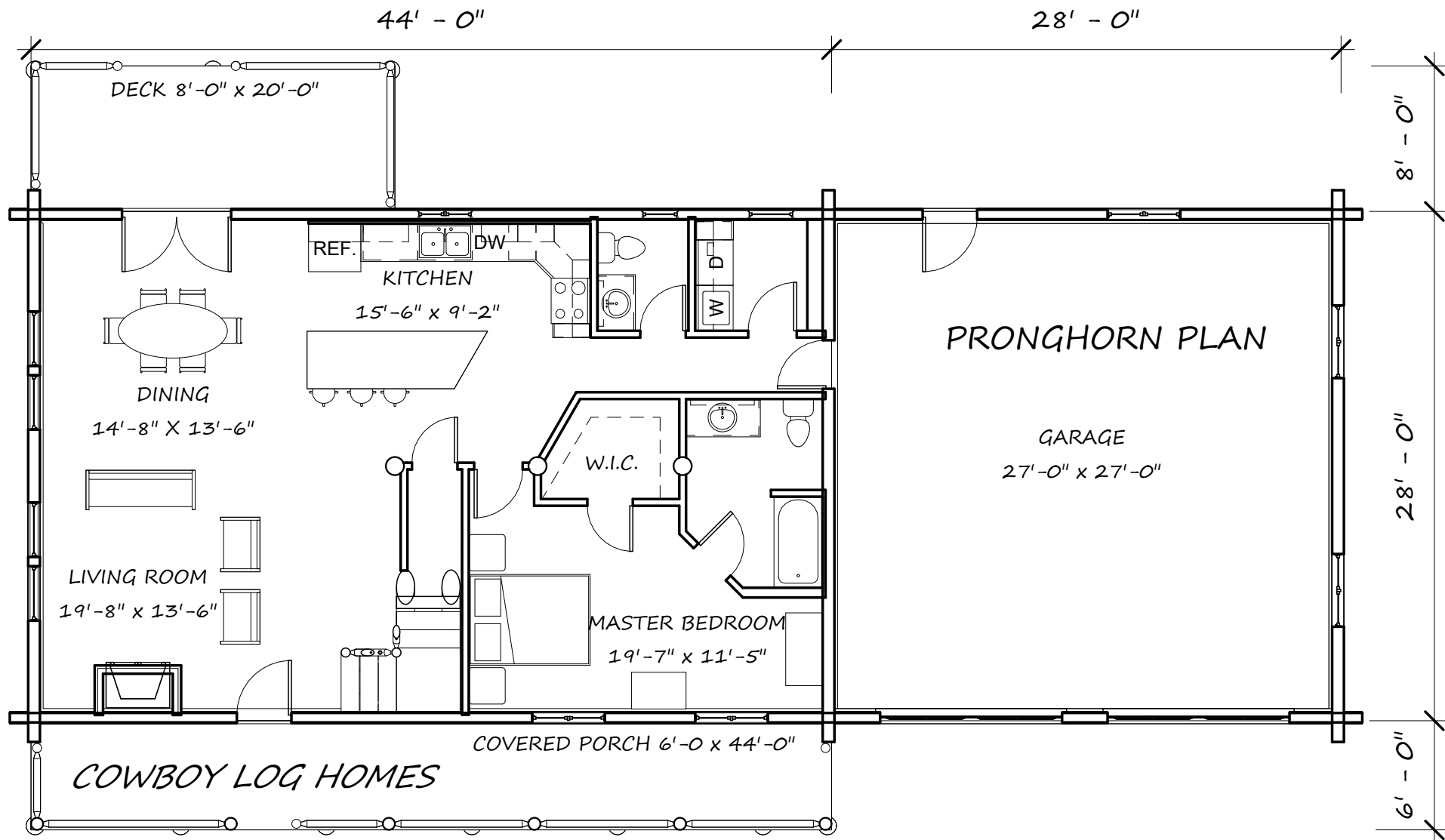
*COWBOY LOG HOMES*



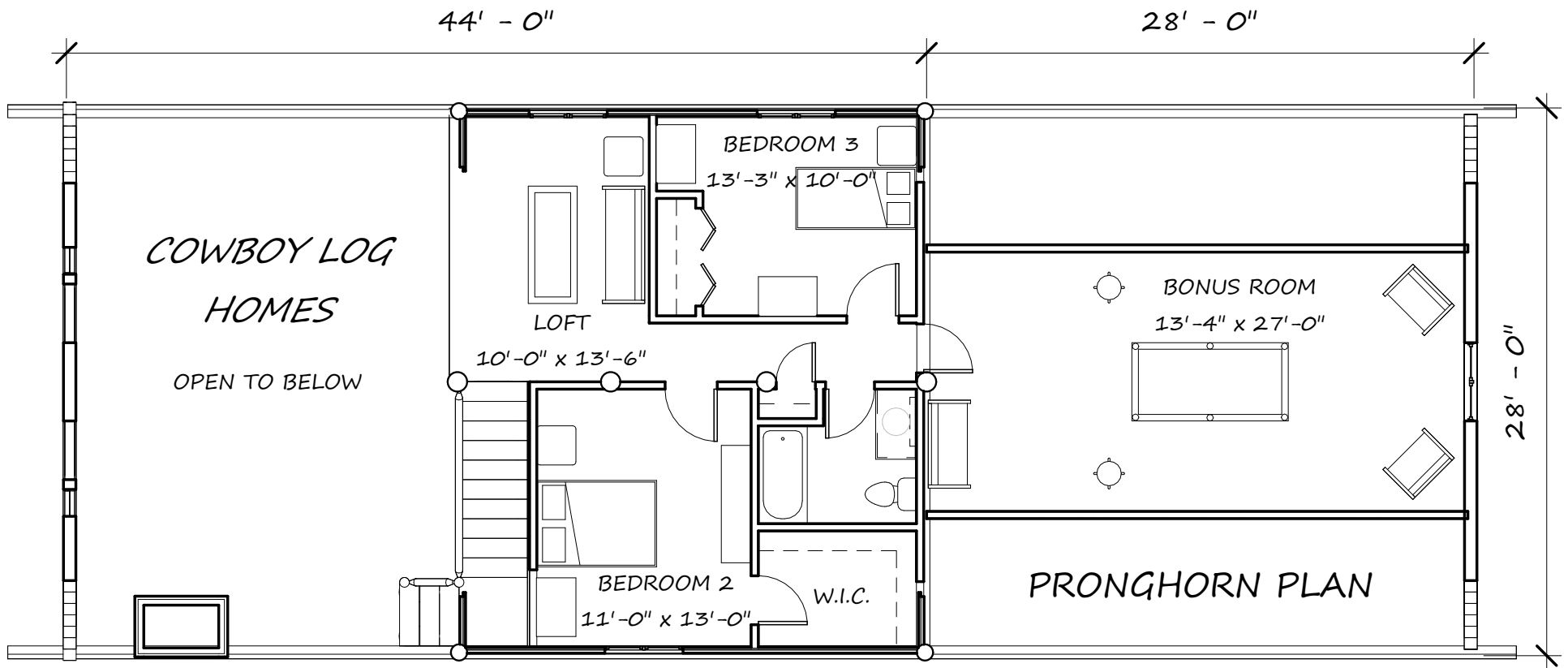
*THE PRONGHORN*

Email: [mike@cowboyloghomes.com](mailto:mike@cowboyloghomes.com)

Phone: (406)388-3458



## THE PRONGHORN

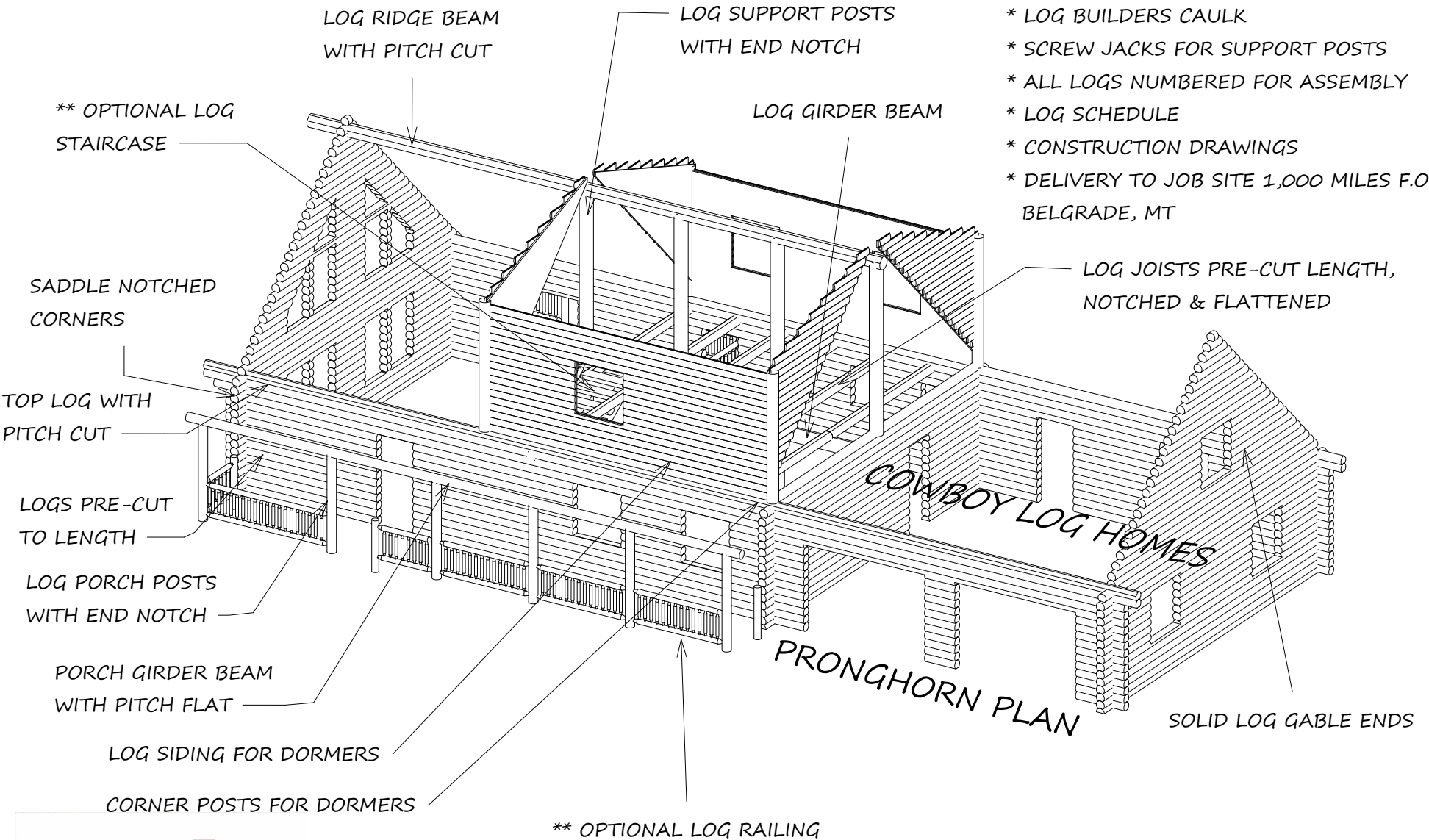


## THE PRONGHORN

# SWEDISH COPE LOG SHELL

WINDOW SILL LOGS, DOOR & WINDOW HEADER LOGS,  
GABLE ENDS, LOG POSTS, LOG BEAMS, ELECTRICAL OPENINGS,  
INTERIOR WALL LOCATIONS REQUIRE FIELD CUTTING.

- \* LAG SCREWS FOR POST & BEAM CONNECTIONS
- \* LAG SCREWS FOR FIRST LOG ROW
- \* ONLY LOG SCREWS
- \* 1" WOOD DOWELS FOR END JOINTS
- \* 2 ROWS OF FOAM TAPE PER LOG COURSE
- \* LOG BUILDERS CAULK
- \* SCREW JACKS FOR SUPPORT POSTS
- \* ALL LOGS NUMBERED FOR ASSEMBLY
- \* LOG SCHEDULE
- \* CONSTRUCTION DRAWINGS
- \* DELIVERY TO JOB SITE 1,000 MILES F.O.B. BELGRADE, MT

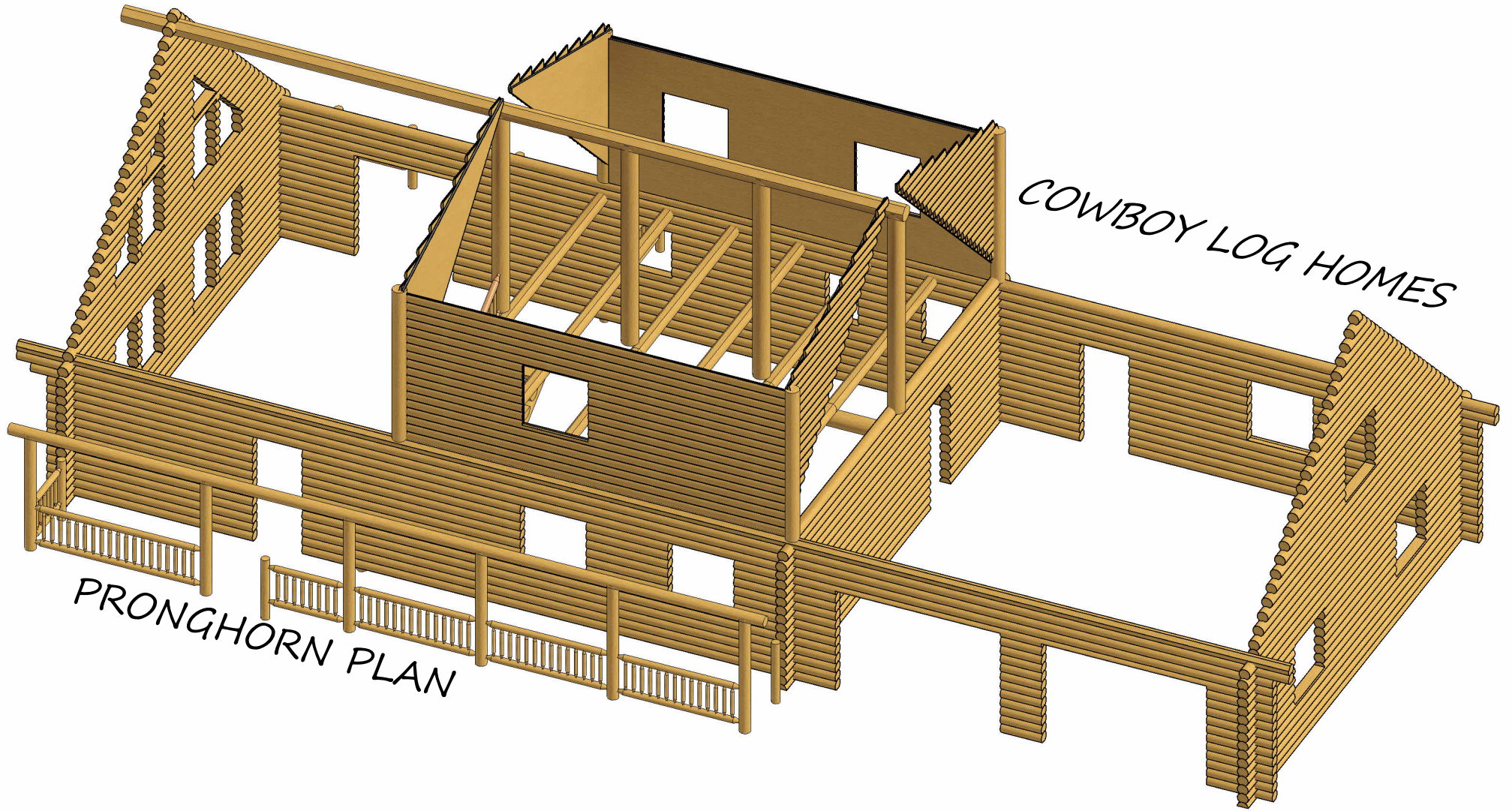


THE PRONGHORN

Email: [mike@cowboyloghomes.com](mailto:mike@cowboyloghomes.com)

Phone: (406)388-3458





## THE PRONGHORN

Email: [mike@cowboyloghomes.com](mailto:mike@cowboyloghomes.com)

Phone: (406)388-3458