



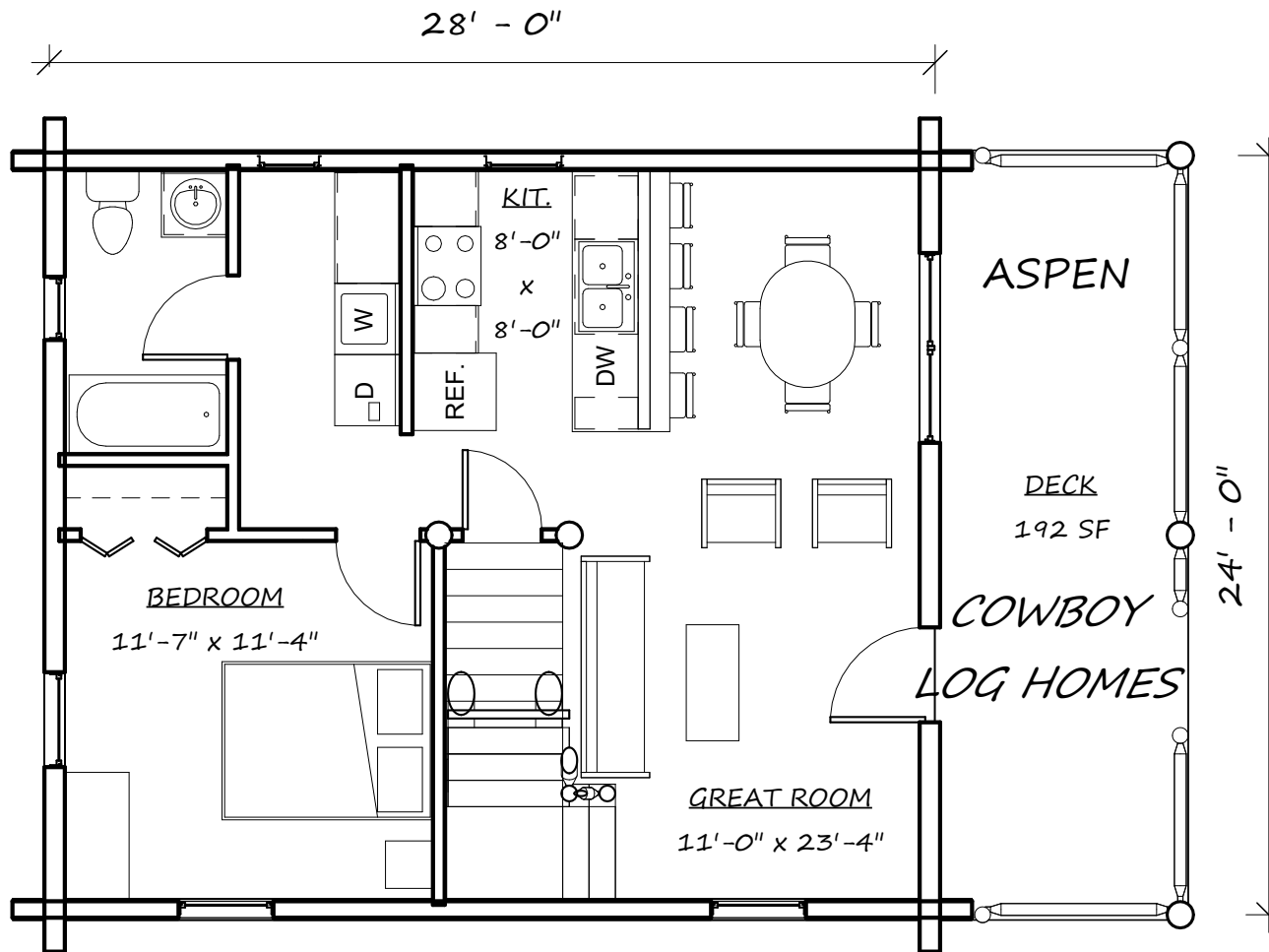
*COWBOY LOG HOMES*



*ASPEN*

Email: [mike@cowboyloghomes.com](mailto:mike@cowboyloghomes.com)

Phone: (406)388-3458



FIRST FLOOR 672 SQ. FT.

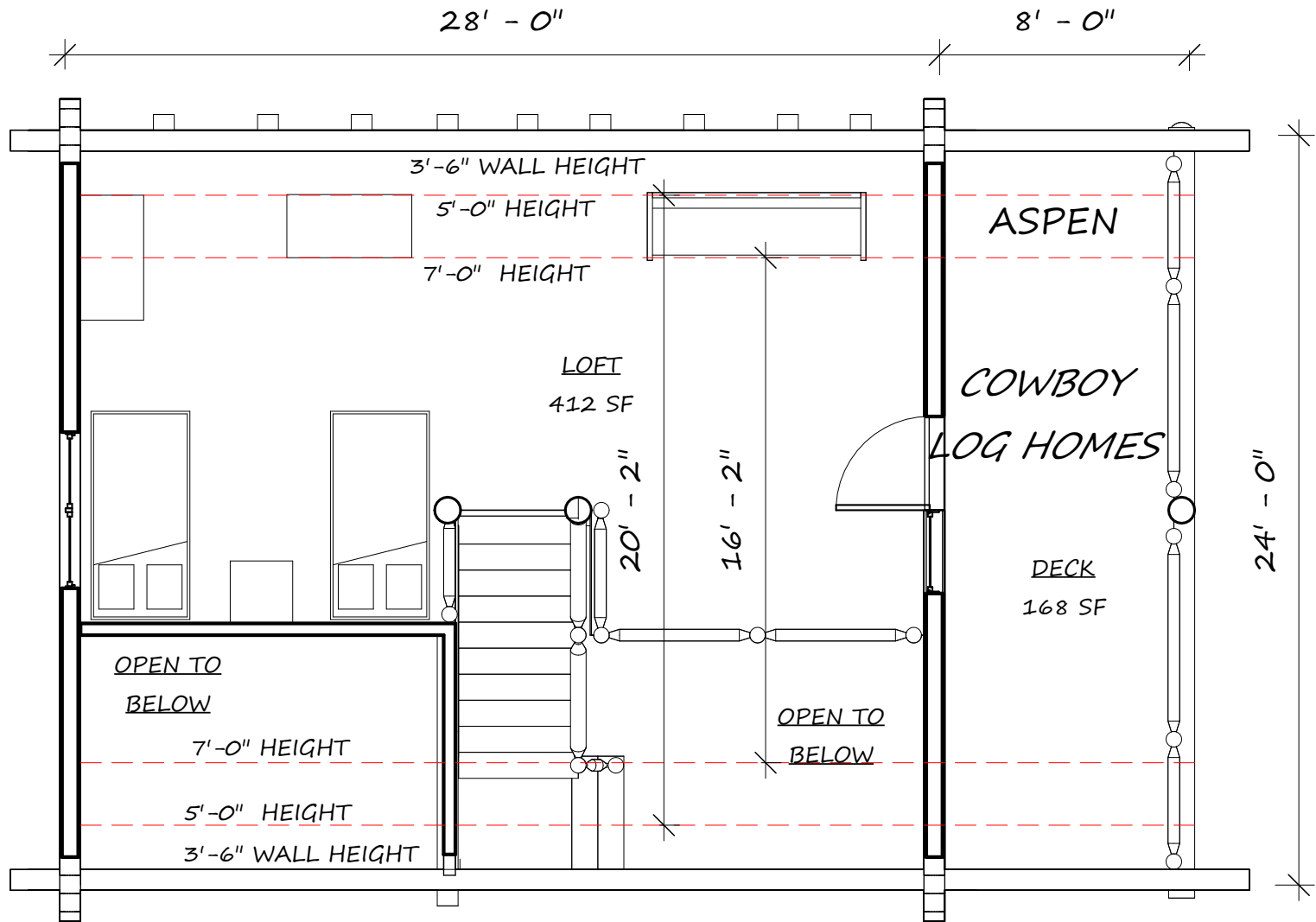
SECOND FLOOR 412 SQ. FT.

TOTAL LIVING SPACE 1,084 SQ. FT.

PORCHES 360 SQ. FT.



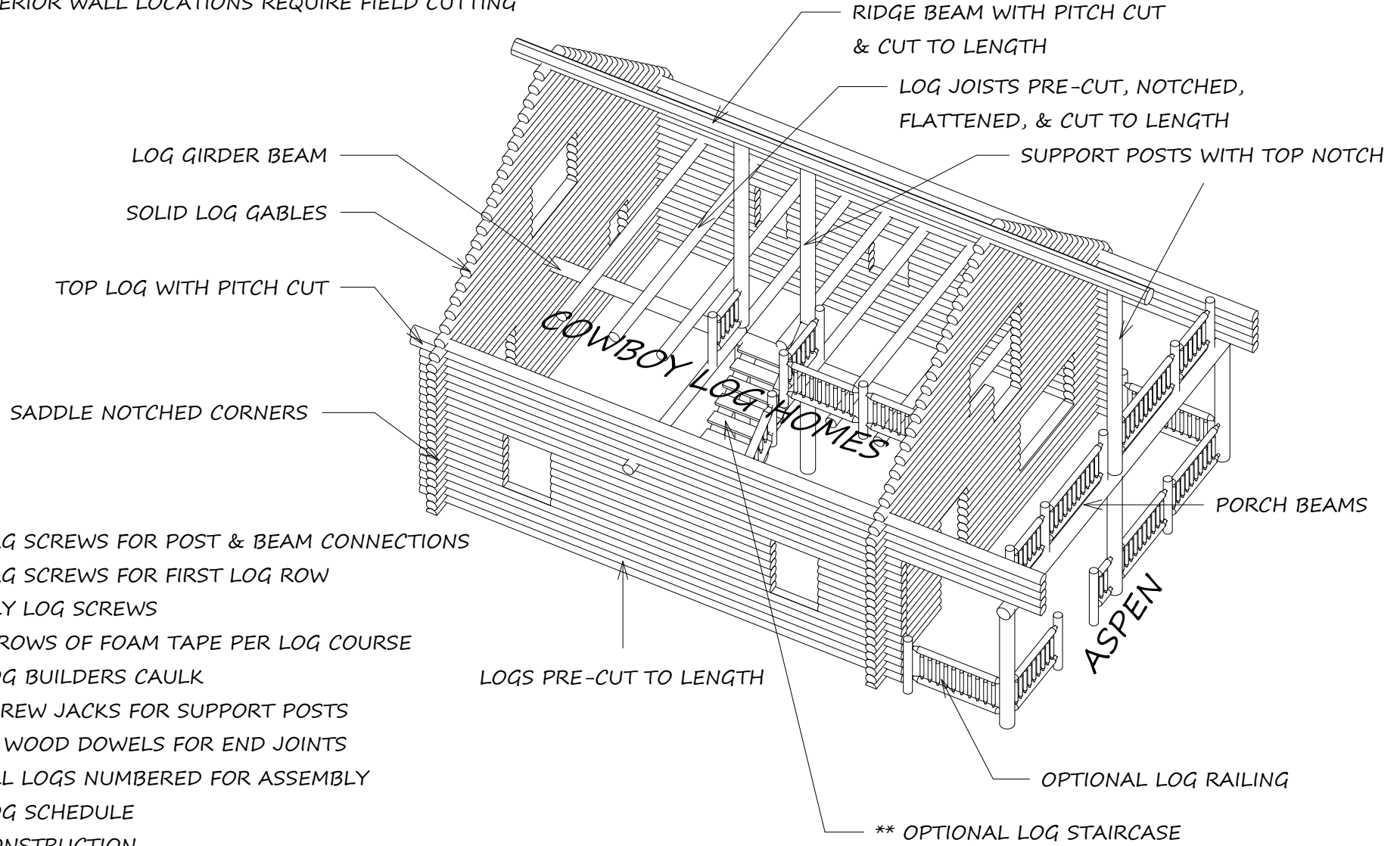
**ASPEN**



ASPEN

WINDOW SILL LOGS, DOOR & WINDOW HEADER LOGS,  
 GABLE ENDS, LOG POSTS, LOG BEAMS, ELECTRICAL OPENINGS,  
 INTERIOR WALL LOCATIONS REQUIRE FIELD CUTTING

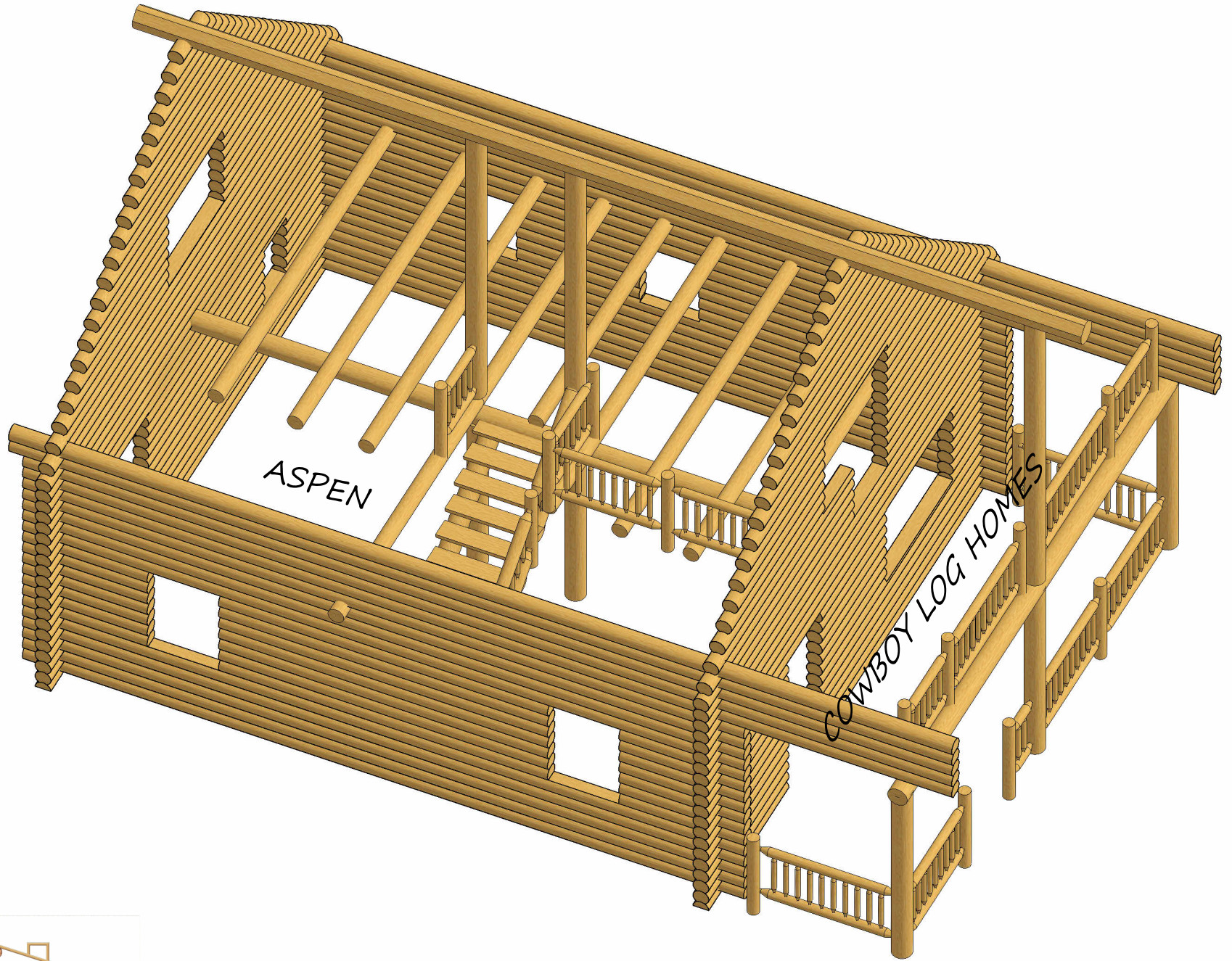
## SWEDISH COPE LOG SHELL PACKAGE



- \* LAG SCREWS FOR POST & BEAM CONNECTIONS
- \* LAG SCREWS FOR FIRST LOG ROW
- \* ONLY LOG SCREWS
- \* 2 ROWS OF FOAM TAPE PER LOG COURSE
- \* LOG BUILDERS CAULK
- \* SCREW JACKS FOR SUPPORT POSTS
- \* 1" WOOD DOWELS FOR END JOINTS
- \* ALL LOGS NUMBERED FOR ASSEMBLY
- \* LOG SCHEDULE
- \* CONSTRUCTION
- \* DELIVERY TO JOB SITE 1,000 MILES F.O.B. BELGRADE, MT.



ASPEN



ASPEN

COWBOY LOG HOMES



ASPEN

Email: [mike@cowboyloghomes.com](mailto:mike@cowboyloghomes.com)

Phone: (406)388-3458