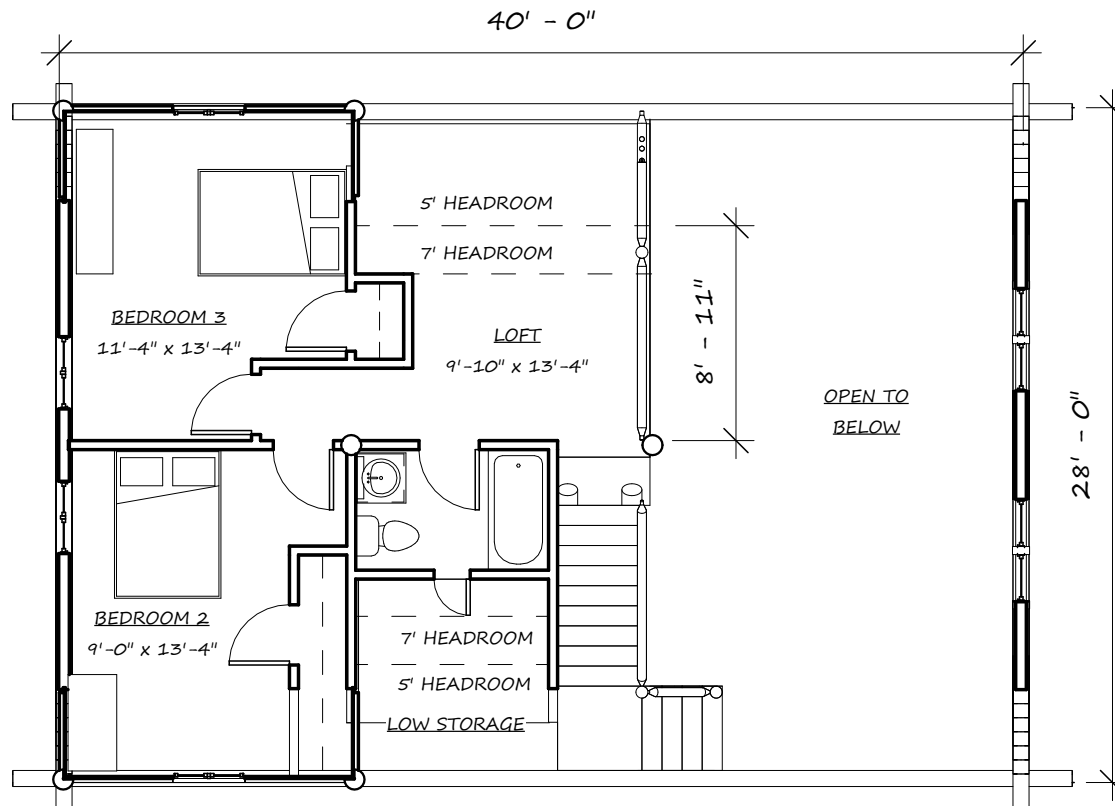


FIRST FLOOR 1,120 SQ. FT.

SECOND FLOOR 544 SQ. FT.

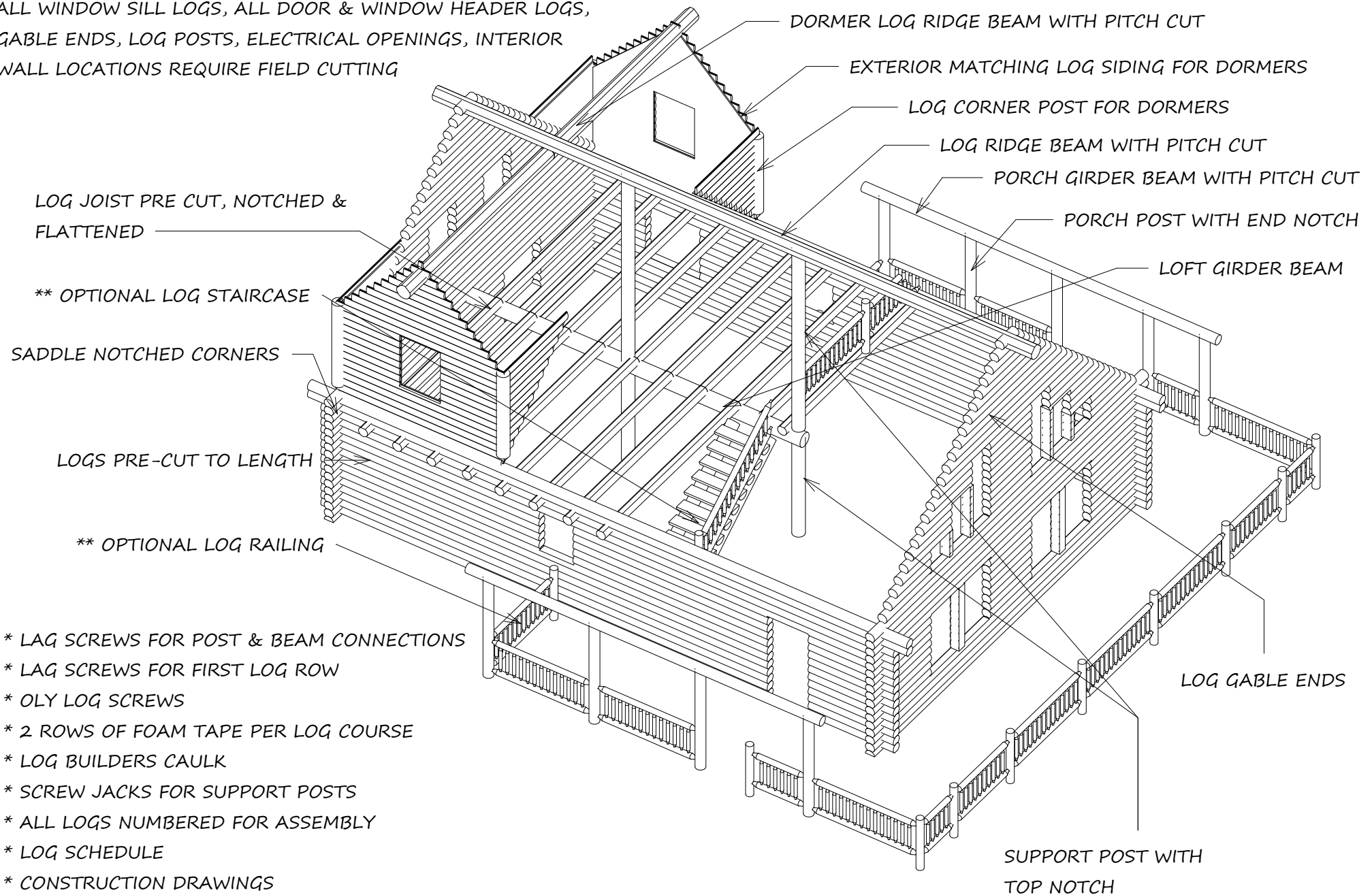
TOTAL LIVING AREA 1,664 SQ. FT.

DECKS 736 SQ. FT.



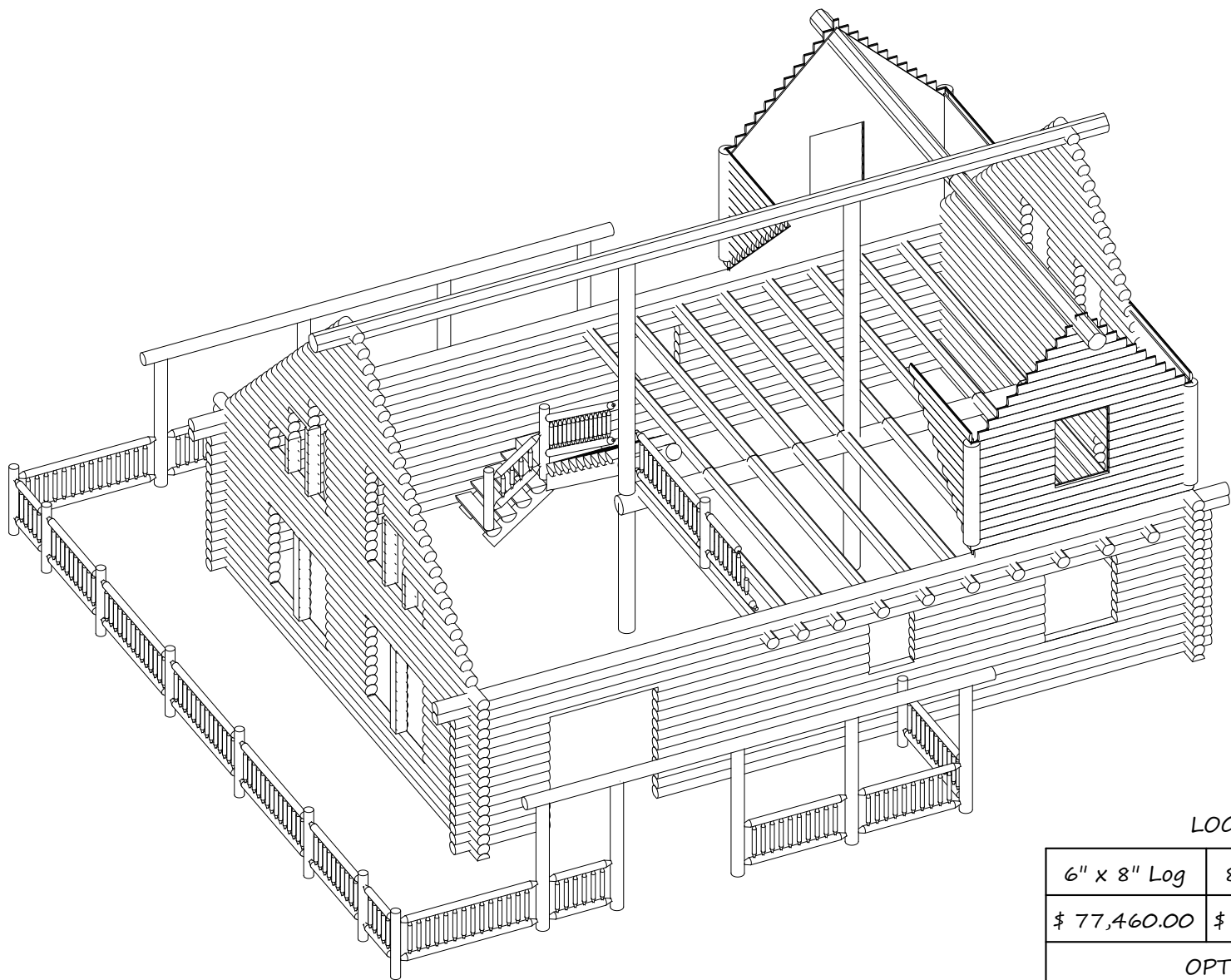
## SWEDISH COPE LOG SHELL PACKAGE

ALL WINDOW SILL LOGS, ALL DOOR & WINDOW HEADER LOGS,  
GABLE ENDS, LOG POSTS, ELECTRICAL OPENINGS, INTERIOR  
WALL LOCATIONS REQUIRE FIELD CUTTING



- \* LAG SCREWS FOR POST & BEAM CONNECTIONS
- \* LAG SCREWS FOR FIRST LOG ROW
- \* ONLY LOG SCREWS
- \* 2 ROWS OF FOAM TAPE PER LOG COURSE
- \* LOG BUILDERS CAULK
- \* SCREW JACKS FOR SUPPORT POSTS
- \* ALL LOGS NUMBERED FOR ASSEMBLY
- \* LOG SCHEDULE
- \* CONSTRUCTION DRAWINGS
- \* DELIVERY TO JOB SITE 1,000 MILES F.O.B.  
FROM BELGRADE, MT.

COWBOY LOG HOMES	SIERRA PLAN	SWEDISH COPE	LOG SHELL DESCRIPTION	4
------------------	-------------	--------------	-----------------------	---



LOG SHELL PRICING

6" x 8" Log	8" x 8" Log	8" Swedish Cope
\$ 77,460.00	\$ 83,394.00	\$ 87,240.00
OPTIONAL MATERIAL		
Log Staircase		\$ 4,800.00
Log Railing		\$ 4,690.00
Dry-In Material		\$ 78,560.00

## DRY IN MATERIALS

### FIRST FLOOR SUB-FLOOR

2" X 8" TREATED SILL PLATE

(3) 1-3/4" X 11-7/8" GIRDER BEAM

(2) 1-3/4" X 11-7/8" RIM BOARD

11-7/8" TJI FLOOR JOISTS

2" X 4" BLOCKING

3/4" X 4' X 8' OSB T&G SUB-FLOOR

### SECOND FLOOR SUB-FLOOR

2" X 8" RIM BOARD

2" X 8" FLOOR JOISTS

3/4" X 4' X 8' OSB T&G SUB-FLOOR

### FRAMING\*

2" X 6" DOOR AND WINDOW BUCKS

2" X 4" AND 2" X 6" INTERIOR WALL

11-7/8" TJI ROOF RAFTERS

1-3/4" X 11-7/8" LVL SUPPORT RAFTERS

1-3/4" X 11-7/8" LVL GABLE SUB-FASCIA

1-1/4" X 11-7/8" LSL BLOCKING & SUB-

2X RAFTERS FOR PORCH ROOF

1/2" X 4' X 8' CDX ROOF SHEETING

TITANIUM ROOF UNDERLAYMENT

2X TREATED DECK FRAMING

2X OR 5/4 DECKING

### EXTERIOR TRIM

1" X 4" PINE DOOR AND WINDOW TRIM

1" X 6" PINE DOOR AND WINDOW HEADER

1" X 12" PINE FASCIA BOARD

1" X 6" PINE RAKE BOARD

1" X 8" PINE FASCIA BOARD FOR PORCH

ROOF<sup>5</sup> PINE T&G SOFFIT

EXTERIOR DOOR ALLOWANCE

WINDOW ALLOWANCE

### FRAMING FOR DORMERS

2" X 6" FRAMING EXTERIOR WALLS

LVL HEADERS OVER WINDOWS

7/16" X 4' X 8' OSB SHEETING

HOUSE WRAP

WINDOW WRAP

\* ITEMS NOT INCLUDED - NAILS, SCREWS, JOIST HANGERS,

BRACKETS, LIQUID NAIL, CAULKING, TREATED POSTS,

FOUNDATION MATERIALS, OR FINISHED ROOFING

