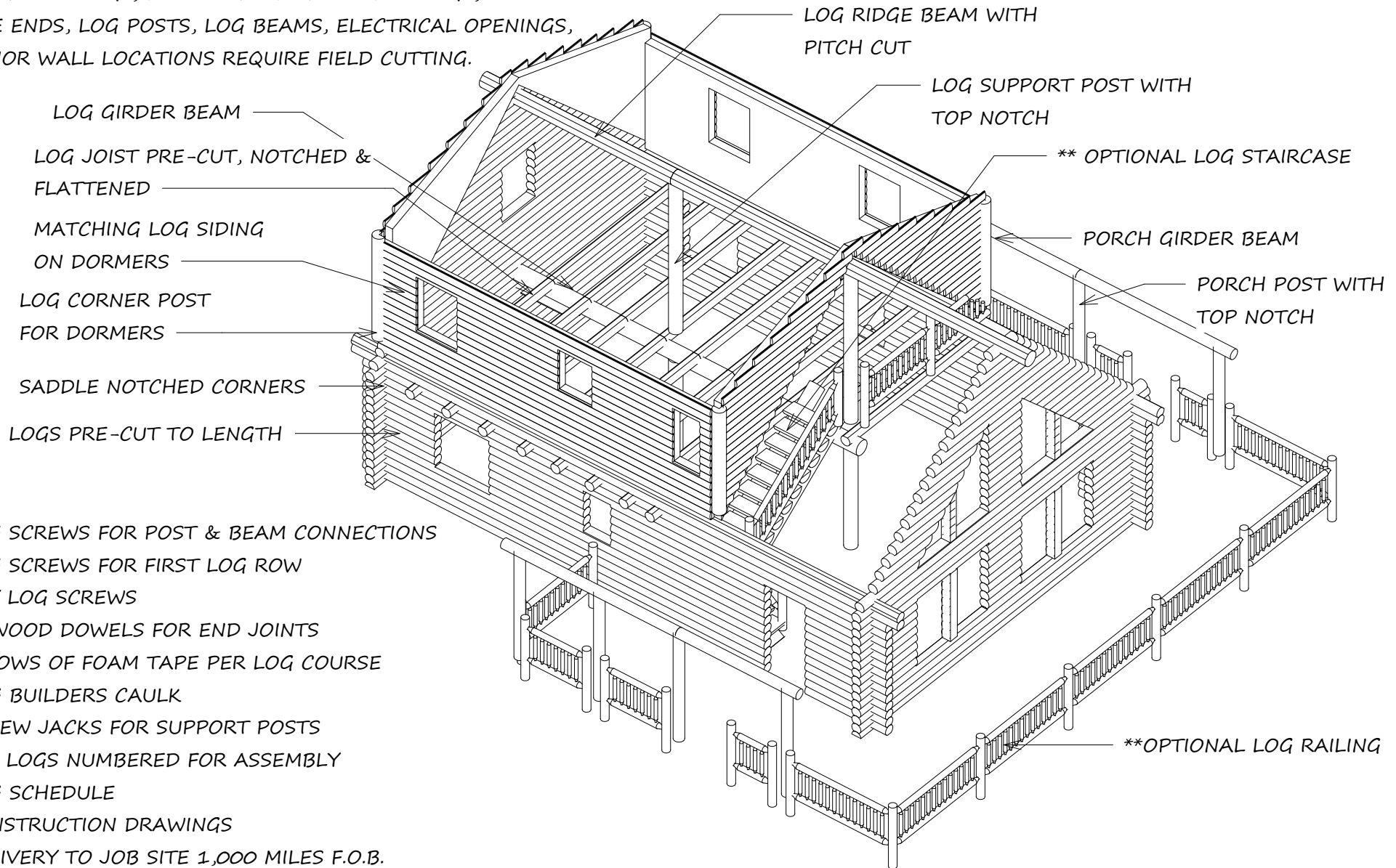
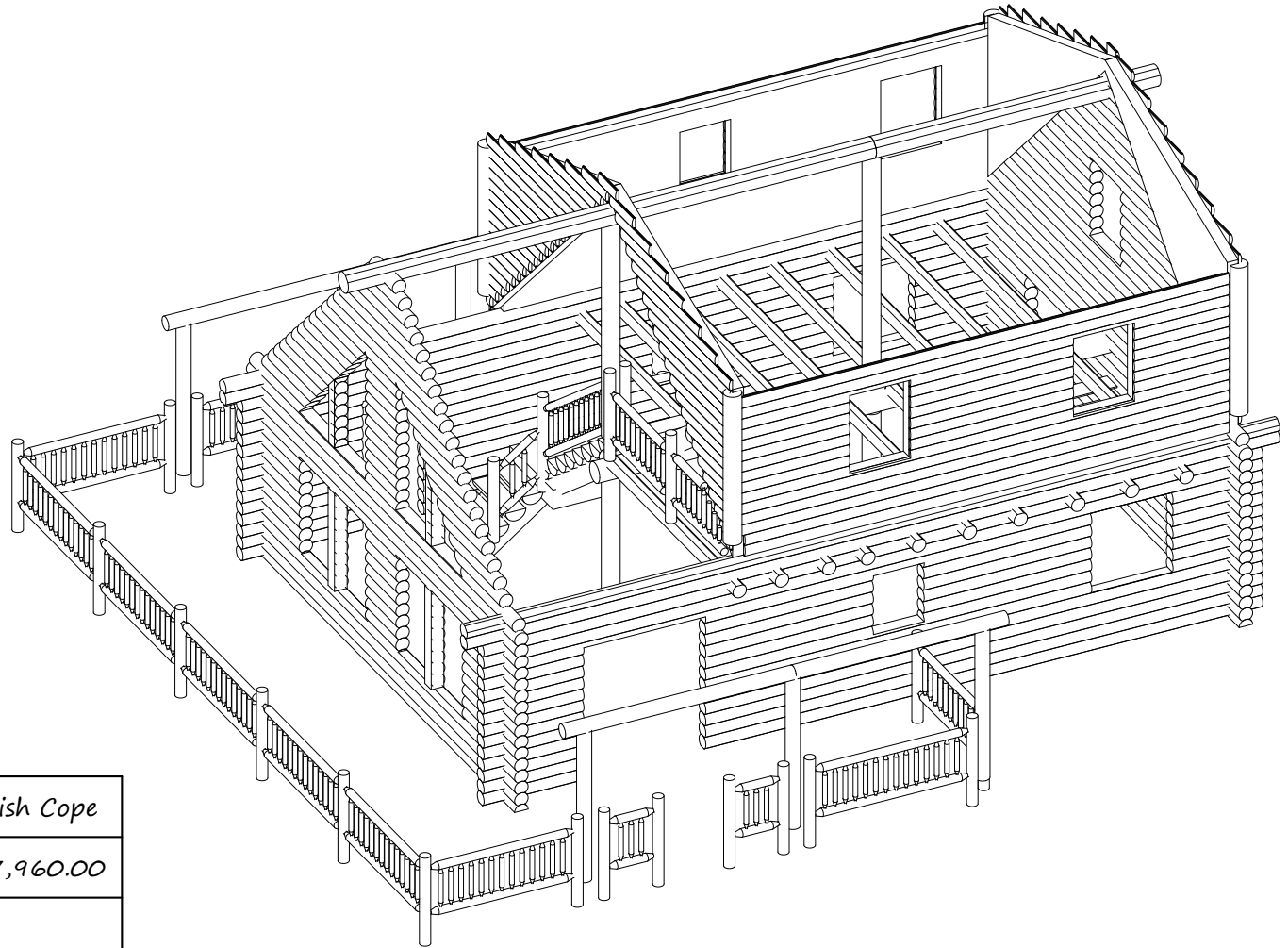


SWEDISH COPE LOG SHELL

WINDOW SILL LOGS, DOOR & WINDOW HEADER LOGS,
GABLE ENDS, LOG POSTS, LOG BEAMS, ELECTRICAL OPENINGS,
INTERIOR WALL LOCATIONS REQUIRE FIELD CUTTING.



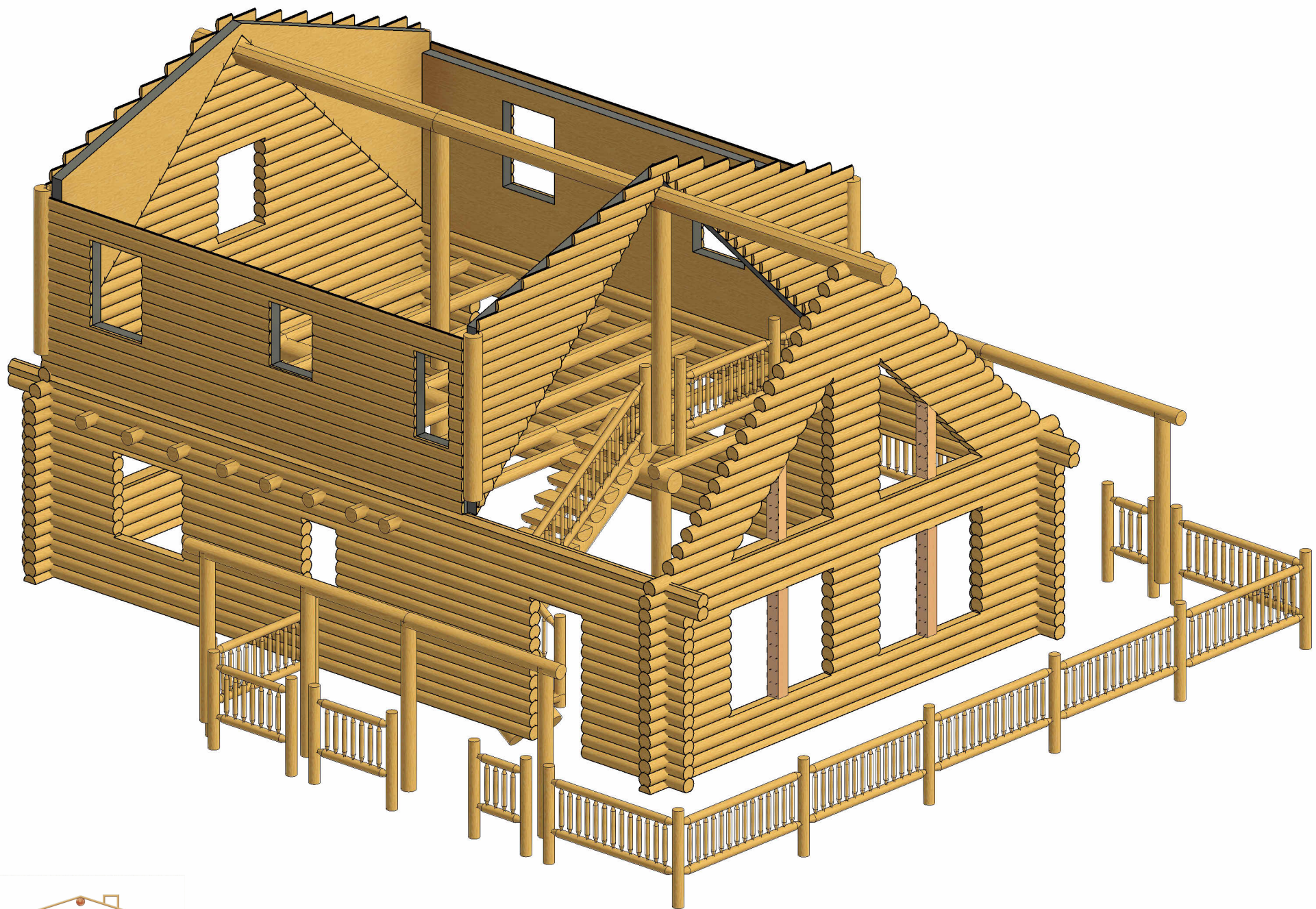
- * LAG SCREWS FOR POST & BEAM CONNECTIONS
- * LAG SCREWS FOR FIRST LOG ROW
- * ONLY LOG SCREWS
- * 1" WOOD DOWELS FOR END JOINTS
- * 2 ROWS OF FOAM TAPE PER LOG COURSE
- * LOG BUILDERS CAULK
- * SCREW JACKS FOR SUPPORT POSTS
- * ALL LOGS NUMBERED FOR ASSEMBLY
- * LOG SCHEDULE
- * CONSTRUCTION DRAWINGS
- * DELIVERY TO JOB SITE 1,000 MILES F.O.B.
BELGRADE, MT.

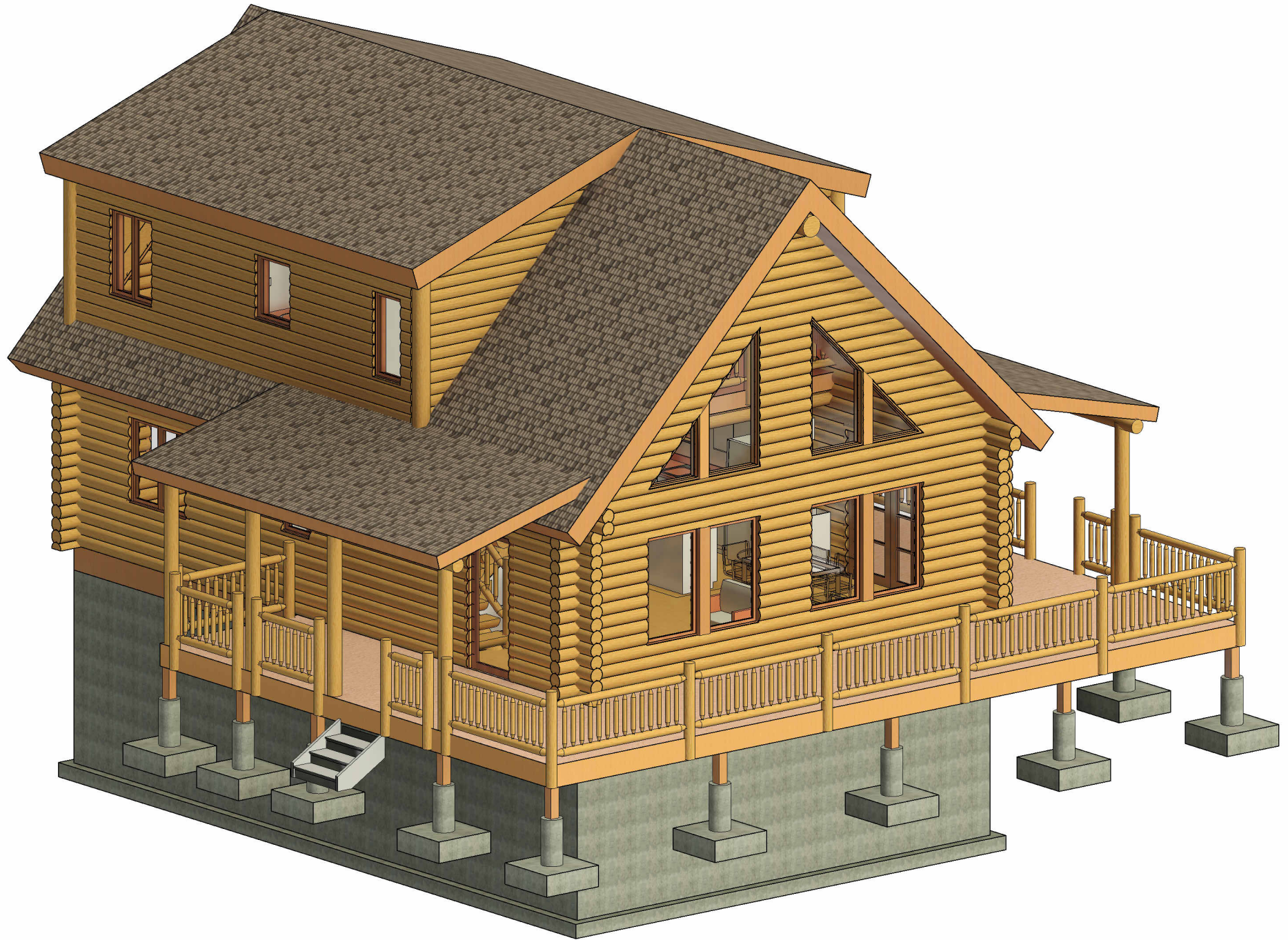


LOG SHELL PRICING

6" x 8" Log	8" x 8" Log	8" Swedish Cope
\$ 67,872.00	\$ 73,150.00	\$ 77,960.00
OPTIONAL MATERIAL		
Log Staircase		\$ 4,800.00
Log Railing		\$ 4,100.00
Dry-In Materials		\$ 52,984.00

THE BRIDGER





DRY IN MATERIAL PACKAGE

FIRST FLOOR SUB-FLOOR

2" X 8" TREATED SILL PLATE

(3) 1-3/4" X 11-7/8" GIRDER BEAM

(2) 1-3/4" X 11-7/8" RIM BOARD

11-7/8" TJI FLOOR JOIST

2X4 BLOCKING

METAL JACK POST

3/4" X 4' X 8' OSB T&G FLOOR SHEATHING

SECOND FLOOR SUB-FLOOR

2" X 8" RIM BOARD

2" X 8" FLOOR JOIST

3/4" X 4' X 8' OSB T&G FLOOR SHEATHING

FRAMING

2" X 6" DOOR AND WINDOW BUCKS

2" X 4" & 2" X 6" INTERIOR WALL FRAMING

11-7/8" TJI ROOF RAFTERS

1-3/4" X 11-7/8" SUPPORT RAFTERS & SUB-FASCIA

11-7/8" TJI BLOCKING

1-1/4" X 11-7/8" EAVE SUB-FASCIA

1/2" X 4' X 8' CDX ROOF SHEATHING

TITANIUM ROOF UNDER LAYMENT

2" X 8" DECK LEDGER

2" X 8" DECK JOIST

(2) 2" X 12" DECK RIM BOARD

5/4" OR 2" X 6" DECKING

EXTERIOR PINE TRIM

1" X 4" PINE DOOR & WINDOW TRIM

1" X 6" DOOR & WINDOW HEADER TRIM

1" X 12" PINE FASCIA BOARD

1" X 6" PINE RAKE BOARD

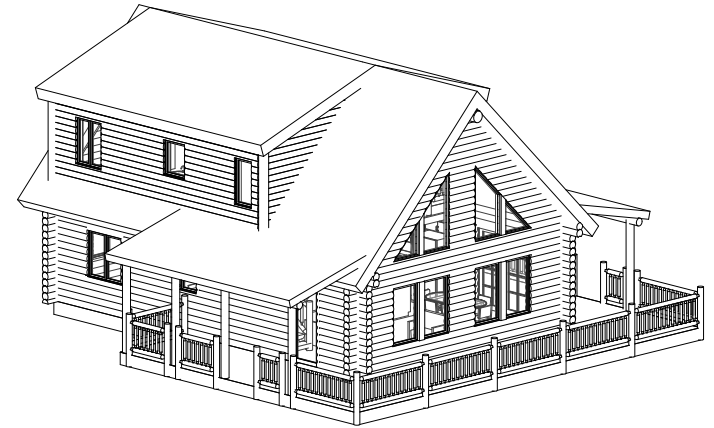
1" X 8" PINE FASCIA BOARD FOR PORCH

1" X 6" PINE T&G SOFFIT

MISCELANEOUS

WINDOWS

EXTERIOR DOORS



*MATERIALS NOT INCLUDED-JOIST HANGERS, NAILS, SCREWS, SIMPSON, CONNECTORS, LIQUID NAIL, CAULKING, AND FINISHED ROOFING